



33 Rochester Drive Thomastown, VIC

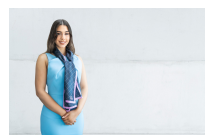


**SPACIOUS LIVING    \*\* SIX MONTH LEASE AGREEMENT \*\***

Currently comfortable spaces include three bedrooms sharing the family bathroom, a generous "L" shaped lounge and a spacious kitchen-meals. Positioned for easy access to Lalor Plaza shopping centre, schools including St Johns and Lalor East Primary, the bus, takeaways and the 24-hour convenience store are within a short walk.

- ? Gas heating
- ? Ducted cooling
- ? Oversize double garage with summer kitchen and 2nd toilet
- ? Shed
- ? Large laundry
- ? Alfresco space in deep rear yard
- ? Large vegetable garden

**Price:**            \$380 per week



**Victoria Kantaras**

loveepping@mail.inspectrealestat



Every precaution has been taken to establish accuracy of the information in this brochure but does not constitute any representation by the vendor or agent.