



11 Gypsy Court Mill Park, VIC



**Display Home Standards**  
**OFFERS CLOSE BY 21st OCTOBER @ 6PM**  
 (Unless Sold Prior)

**Price:** Sold

Why build when you can purchase this outstanding family home ready for immediate enjoyment. Located in the ever-popular Blossom Park Estate and only a stone's throw from Plenty Gorge Parklands & Tanunda Wetlands this home offers a great combination of formal and informal living areas.

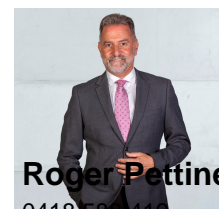
Downstairs comprises: Formal entry leading to formal lounge, study/office, solid timber kitchen with s/s Bosch appliances, tiled meals/family area and rumpus/games room.

Upstairs comprises: four bedrooms with massive master(ensuite and WIR), huge retreat, central bathroom and balcony looking out towards the Dandenongs.



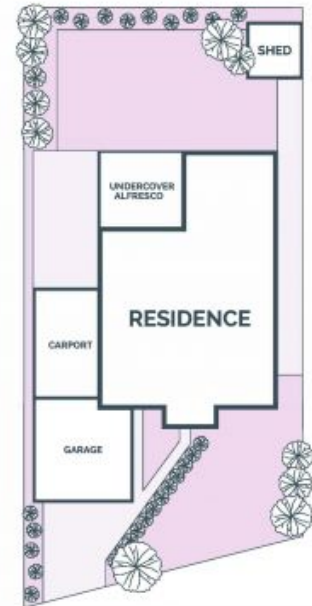
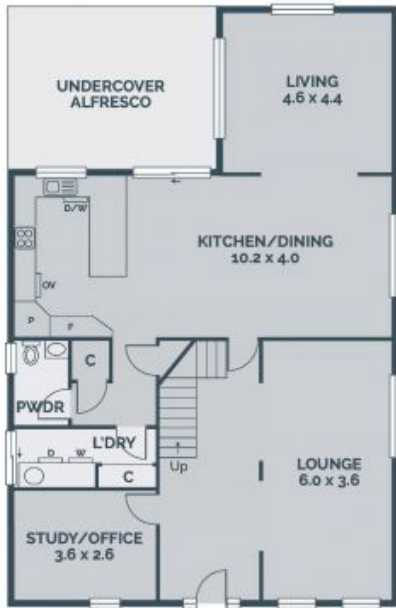
**Jim Vasiliou**

0418 123 034  
 jim.v@lovere.com.au



**Roger Pettinella**

0418 588 419  
 roger.p@lovere.com.au



Every precaution has been taken to establish accuracy of the information in this brochure but does not constitute any representation by the vendor or agent.