



3 Monterey Court Mill Park, VIC

 3

 2

Freshly Painted 3 Bedroom Family Home!!

This gem of a home comprises of 3 bedrooms & 2 bathrooms and is one you don't want to miss. With its freshly coat of paint & huge backyard, it is situated in a quiet court close to parks, schools & transport.

Price: \$400 per week

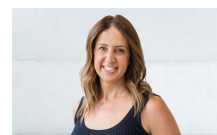
NEAREST SCHOOLS: Lalor North Secondary, Lalor North Primary, St Monica's College, childcare and medical amenities close by.

NEAREST TRANSPORT: Bus services, Epping Station.

LOVE & CO NO.1 FOR PROPERTY MANAGEMENT



Toula Lovett



Toula Lovett

lovemillpark@mail.inspectrealest.com.au | lovemillpark@mail.inspectrealest.com.au