



20 Epsom Avenue Epping, VIC

3

2

2

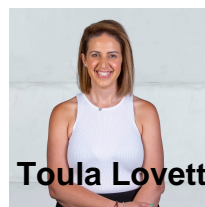
Lovely Family Home

Families in need of room to move, play and entertain can't miss this expansive home. This is your chance to enjoy a light-filled layout with plush bedrooms, two beautifully renovated bathrooms and multiple living spaces to ensure a room for every mood and occasion.

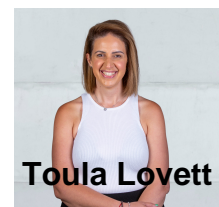
A gorgeous kitchen awaits the cook of the household, complete with modern appliances and ample storage within the all-white, cabinetry. Meals can be enjoyed at the breakfast bar, in the dining area or you can step outside and take your pick from a range of living spaces.

There is a covered deck ready for summertime BBQs, a sun-soaked terrace where you can enjoy your morning coffee and a covered, semi-enclosed lounge area with a built-in bar for entertaining. There are no large gardens to maintain, so you can spend your downtime making the most of these incredible outdoor living rooms.

Price: \$500 Per Week



Toula Lovett



Toula Lovett

lovemillpark@mail.inspectrealest.com.au | lovemillpark@mail.inspectrealest.com.au