



3/35 Wedge Street Epping, VIC



2



1



1

WALKING DISTANCE TO EVERYTHING!!!

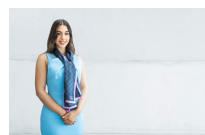
Situated a short stroll to Epping Plaza, Epping Train Station, St Monica's College, St Peter's Primary School, vast choice of eateries, buses, and lots more this renovated unit is sure to turn heads.

Comprising;

- Two bedrooms
- Built in robes
- Gas heater
- Carpet and tiles throughout
- Dishwasher
- Car space x1

Other features include modern kitchen with stainless steel cooking appliances and dishwasher, adjoining lounge/living and a low maintenance courtyard.

Price: \$330 per week



Victoria Kantaras

lovepping@mail.inspectrealestat