

2 Rothwell Court Epping, VIC

4

2

3

### One-Of-A-Kind - Superb Inside & Out

Capturing an enviable position in a highly sought-after pocket of Epping, this delightfully updated & extended brick veneer classic with multiple living zones presents a fabulous space for family living & entertaining. Tucked away in a peaceful & private court setting, a large front garden greets you on arrival, while a welcoming entrance sets the tone for a uniquely captivating home.

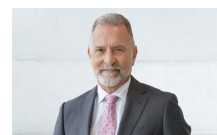
Step inside and be greeted by stunning polished timber floors to access a huge lounge/living zone whilst the nucleus of the home is undoubtedly an open layout meals and family zone that sits beneath a soaring ceiling and includes an updated well-equipped kitchen with stainless steel appliances (including dishwasher) & breakfast bar overlooking the stunning and spacious rear yard. Downstairs also two bedrooms (including the master), laundry and powder room.

**Price:** Sold \$820,000



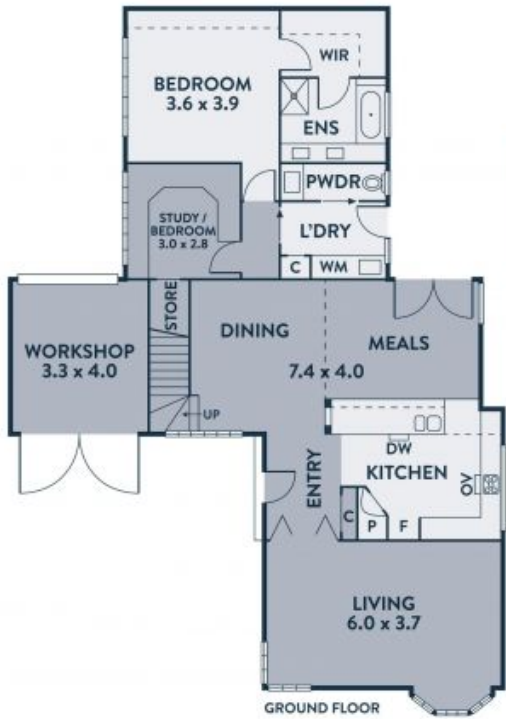
**John Gioftsdis**

0410 522 195  
john.g@lovere.com.au



**Roger Pettinella**

0418 588 419  
roger.p@lovere.com.au



Every precaution has been taken to establish accuracy of the information in this brochure but does not constitute any representation by the vendor or agent.

**LOVE & CO**

2 Rothwell Court

Epping, VIC