



675 Plenty Road Reservoir, VIC

## PLENTY OF EXPOSURE

- Office/ retail space of 120 sqm (approx.)
- 3 Separate Office Rooms
- Reception Area
- Lunchroom
- Great rear access and parking
- Zoned Business 1

Rental: \$24,000 pa, \$2,000 pcm, \$461.53 pw  
(Plus Outgoings & GST)

**Council Rates:** \$0.00 p/q

**Water Rates:** \$0.00 p/q

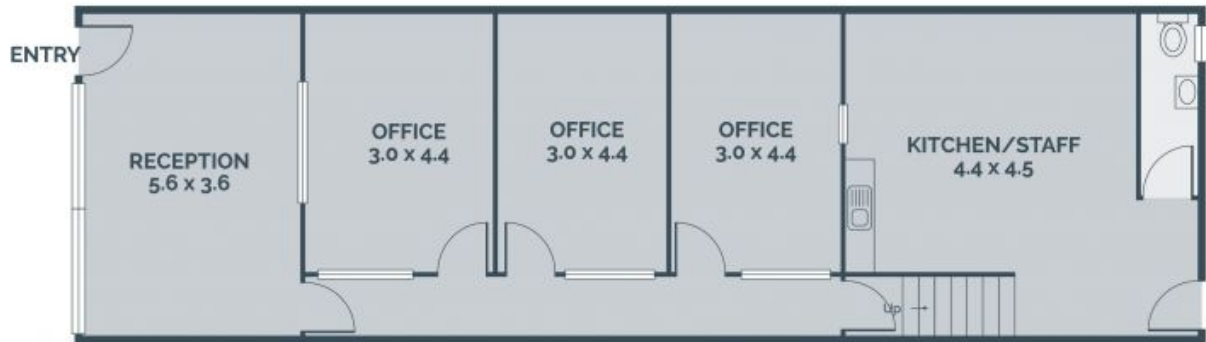
**Strata Rates:** \$0.00 p/q



**Michael Sabelberg**

0450 554 317

michael.s@lovere.com.au



Every precaution has been taken to establish accuracy of the information in this brochure but does not constitute any representation by the vendor or agent.

LOVE & CO

675 Plenty Road

Reservoir, VIC

LOVE & CO