



1/20A Maserati Drive Epping, VIC



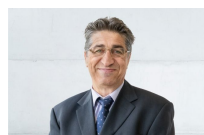
### Position, Privacy & Perfect Proportions

Peacefully positioned at the front of a boutique block of only two, this spacious single-level home/unit delivers a terrific interior of house-like proportions in a prized Epping pocket. Offering a free-flowing floorplan lined bathed in natural light throughout, A well-sized kitchen overlooks an open-plan living & dining area that leads seamlessly through to an expansive and fully paved courtyard, perfect for entertaining. Three bedrooms with built-in robes, a central modern bathroom with separate toilet/powder room, full-sized laundry & single-car garage complete the floorplan of this central Epping retreat.

Bonus features include:

- ? Additional off-street parking in front of the home
- ? Walk-in robe to master bedroom
- ? Ducted heating throughout

**Price:** \$525,000



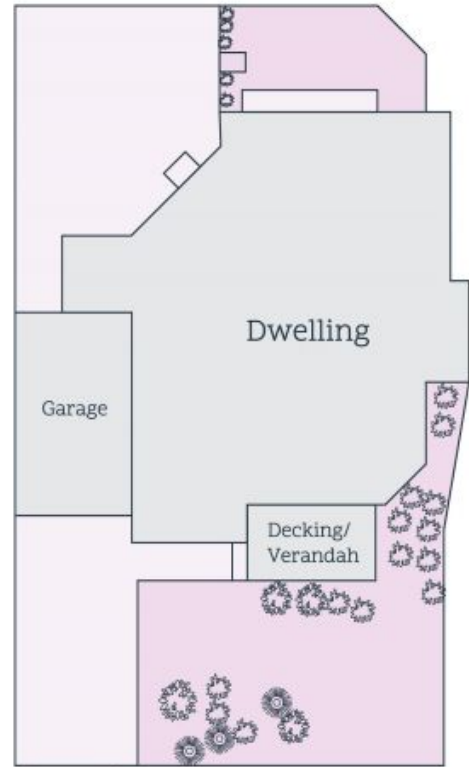
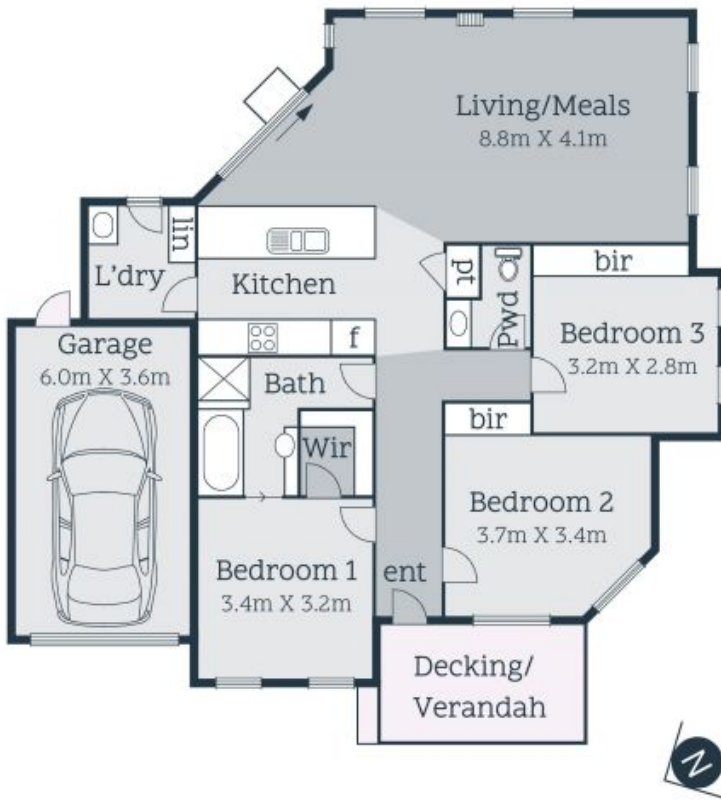
**Jim Vasiliou**

0418 123 054  
jim.v@lovere.com.au



**John Gioftsidis**

0410 522 195  
john.g@lovere.com.au



Site Plan

Every precaution has been taken to establish accuracy of the information in this brochure but does not constitute any representation by the vendor or agent