



15 Elysee Avenue South Morang, VIC

3 2 2

Space For Every Mood And Every Occasion

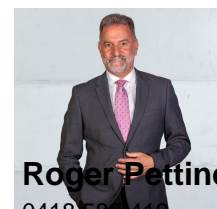
A popular choice for those craving convenience and comfort, this surprisingly spacious home delivers plenty of living and accommodation options for the family that likes to spread out, all within garden spaces focused on entertaining, not maintaining. The carefully considered ground floor layout includes a sitting area, lounge (both with a garden outlook) and a living-meals overlooked by the stone, glass and stainless steel equipped kitchen. A first-floor retreat provides the perfect space for the kids to lounge and learn while providing access to the three bedrooms (main with ensuite) and the family bathroom! Footsteps to the bus stop, almost as close to creekside parks and trails it is central to schools, cafes, supermarkets, South Morang station and Westfield!

- ? Ducted heating and cooling
- ? NBN connection
- ? Day-night blinds

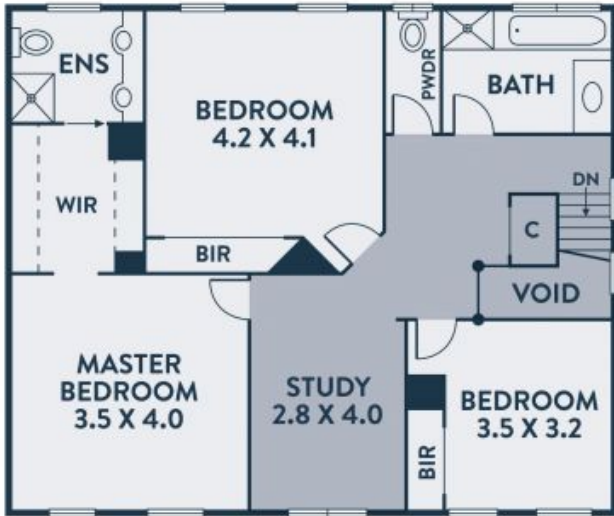
Price: Sold \$760,000



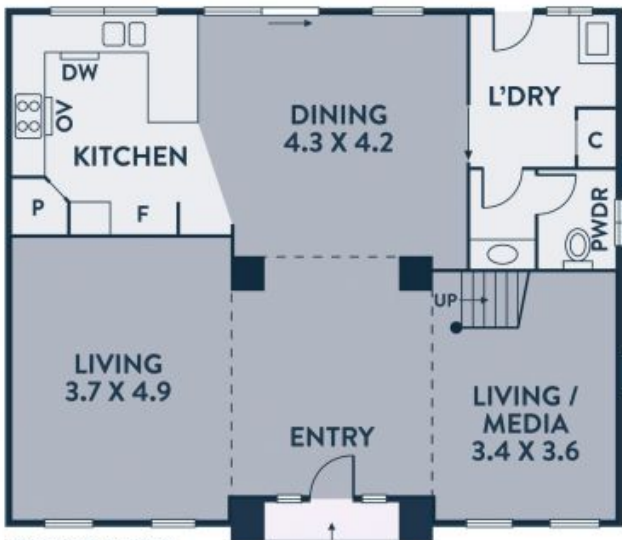
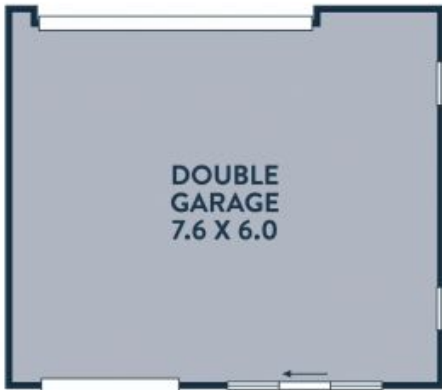
Nick Kandi
0412 310 704
nick.k@lovere.com.au



Roger Pettinella
0418 588 419
roger.p@lovere.com.au



FIRST FLOOR



GROUND FLOOR

PREMIER AVENUE
ACCESS



Every precaution has been taken to establish accuracy of the information in this brochure but does not constitute any representation by the vendor or agent.

LOVE & CO

15 Elysee Avenue

South Morang, VIC