



5/23-25 Wilfred Road Ivanhoe East, VIC



Low Maintenance Living In Village Locale

Local convenience set in a quiet location is this meticulously presented villa unit. Secure and secluded a single-level home is elegant and modern in profile. Downsize, first-home buyers and investors will be immediately impressed as polished floorboards complemented by open light filled living space. The superbly proportioned and light-filled layout includes two great-size bedrooms (built-in robes), spacious living and dining areas, well-appointed kitchen (stainless-steel appliances), centrally located bathroom. Additional inclusions of ducted heating and cooling. Modern living at its finest is offered here in a highly sought-after location. A low maintenance courtyard compliments the rest of the home, single garage and further off-street parking. A hop, skip or jump out your front door right into Ivanhoe East Village, 15 minutes to the CBD, East Ivanhoe Primary, take the dog for walks to Ivanhoe Park. A wonderful opportunity awaits. One not to miss out on!

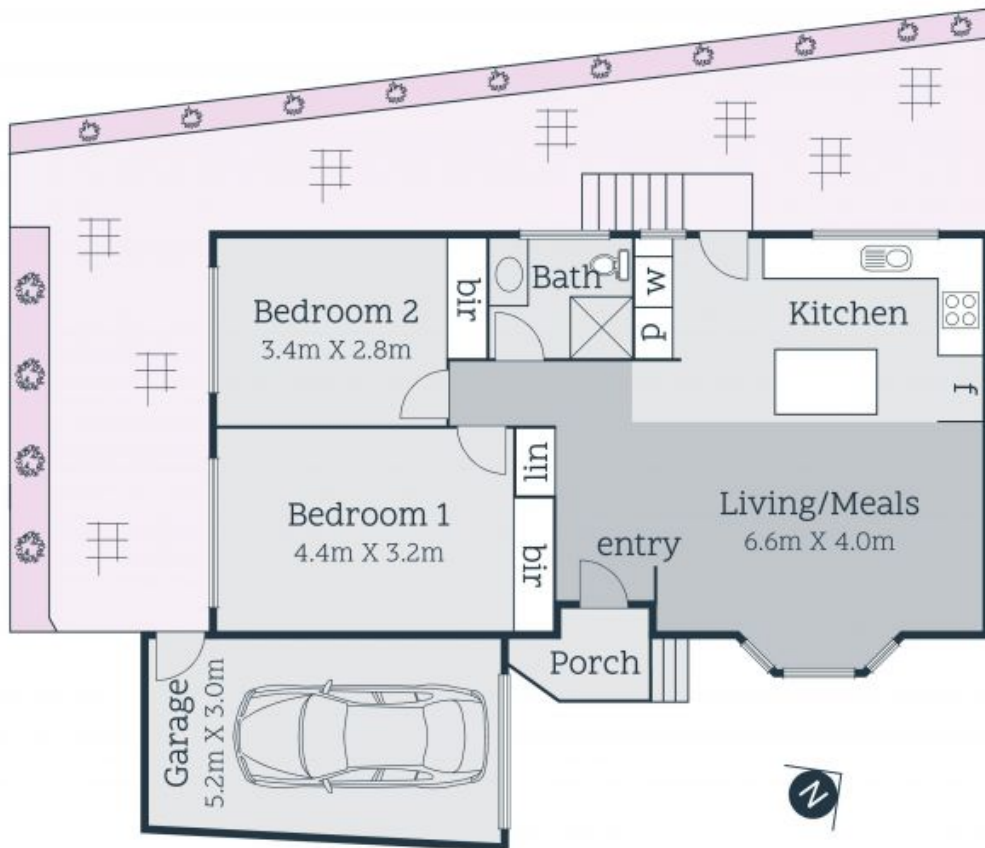
Price: SOLD - \$750,000



Jess Ross
0467 083 804
jess.r@lovere.com.au



Kannan Subramanian
0411 711 232
kannan.s@lovere.com.au



Every precaution has been taken to establish accuracy of the information in this brochure but does not constitute any representation by the vendor or agent.



5/23-25 Wilfred Road

Ivanhoe East, VIC