



21/2 Stillman Drive Mill Park, VIC



2



1



1

Easy-Care Living, Central Location

Discover a bright and beautiful abode with this light-filled Mill Park unit. You'll live within a quiet and peaceful complex enveloped by parklands and located just moments from Westfield Plenty Valley, transport options and a host of other amenities.

Inside, the layout offers two bedrooms including one with a bay window and ensuite access to the two-way bathroom. A lovely living room invites you to relax with a coffee in hand or you can flow through into the meals area that leads to the rear courtyard and alfresco.

The kitchen is well-equipped with ample storage and there is an full-sized laundry and an attached single garage to ensure the home is as functional as it is comfortable. With no large gardens to maintain, this is your chance to live a invest with confidence, start out in style or downsize without compromise.

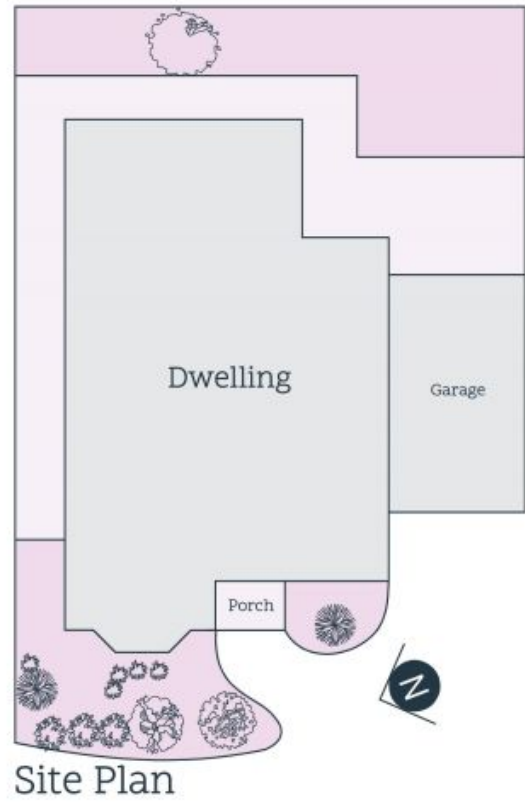
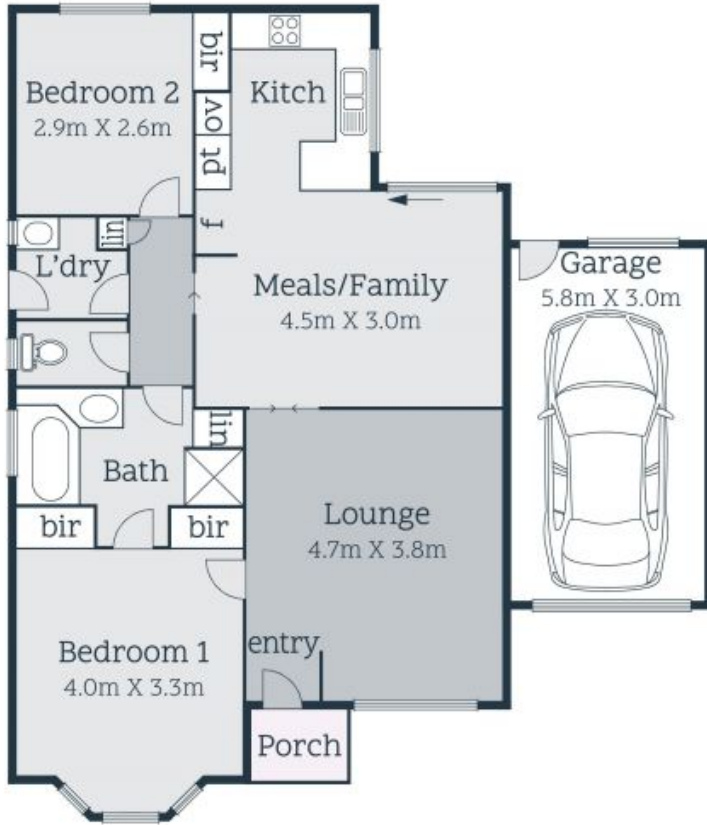
Price: SOLD - \$505,000



John Gioftsdis

0410 522 195

john.g@lovere.com.au



Every precaution has been taken to establish accuracy of the information in this brochure but does not constitute any representation by the vendor or agent