



1/2 Brand Drive Thomastown, VIC

GREAT OFFICE/WAREHOUSE

Available from the 9th of May.

- Total building area 172 sqm (approx)
- Mezzanine 60.5 sqm (approx.)
- Ground floor office 46.5 sqm (approx.)
- Kitchen & Lunchroom
- Container height RSD
- 3 phase
- Street frontage with lock up front yard
- 2 Car spaces

Rental:
 \$21,000PA, \$1,750pcm, \$403.84PW
 (Plus GST and Outgoings)

Council Rates: \$0.00 p/q
Water Rates: \$0.00 p/q
Strata Rates: \$0.00 p/q



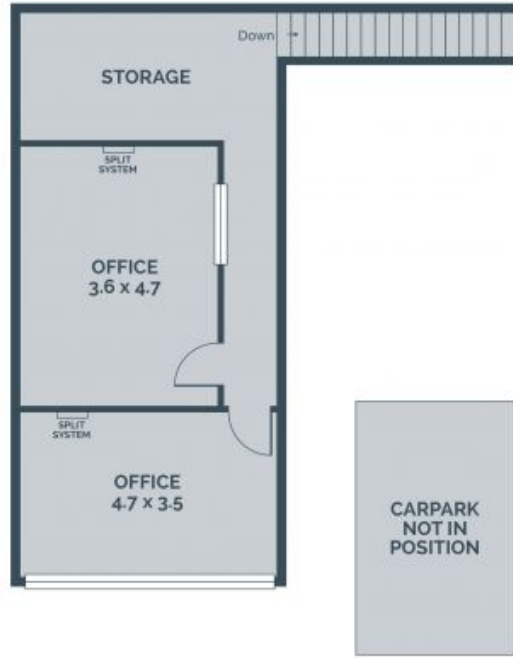
Michael Sabelberg
 0450 554 317
 michael.s@lovere.com.au



Branko Agatanovic
 0448 035 565
 branko.a@lovere.com.au



GROUND FLOOR



MEZZANINE

Every precaution has been taken to establish accuracy of the information in this brochure but does not constitute any representation by the vendor or agent.

LOVE & CO

LOVE & CO

1/2 Brand Drive

Thomastown, VIC