



16/41-43 Leinster Grove Northcote, VIC

 2
  1
  1

City Living With Tranquil Surrounds

Open for inspections at an advertised time, can take place with density limits and a cap of 30 people indoors. All attendees must be fully vaccinated, must check in using the Service Victoria app and will be requested provide proof of vaccination at check in.

People who are not fully vaccinated or do not want to reveal their vaccination status need to contact the agent to organize a way to inspect the property.

Overlooking the Northcote Golf course, this rear situated two-bedroom townhouse, offers a free-flowing living and dining area that leads to an outdoor courtyard.

Positioned close to St. George Road with a 10-minute walk to chic caf?s & restaurants on High Street & quick tram ride to Preston Market and City with tranquil walks, to Merri Greek and Mayer Park.

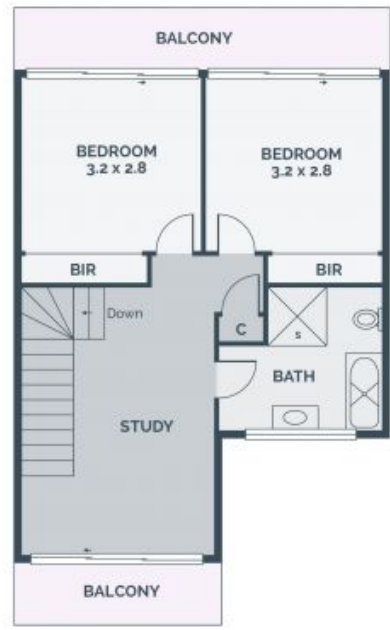
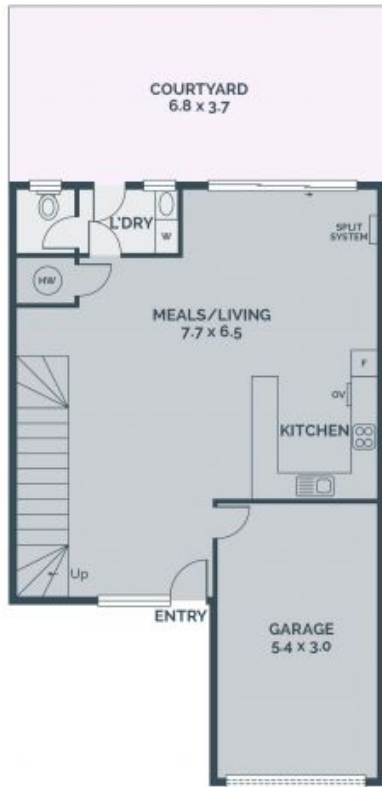
Price: SOLD - \$880,000



Noel Crouch
0412 207 117
noel.c@lovere.com.au



Zese Theocharis
0431 336 657
zese.t@lovere.com.au



Every precaution has been taken to establish accuracy of the information in this brochure but does not constitute any representation by the vendor or agent.



16/41-43 Leinster Grove

Northcote, VIC