



610/251 Johnston Street Abbotsford, VIC

 2
  2
  1

### Welcome to the Club!

Open for inspections at an advertised time, can take place with density limits and a cap of 30 people indoors. All attendees must be fully vaccinated, must check in using the Service Victoria app and will be requested provide proof of vaccination at check in.

People who are not fully vaccinated or do not want to reveal their vaccination status need to contact the agent to organise a way to inspect the property.

Abbotsford is one of Melbourne's iconic suburbs and 251 Johnston Street is ode to the best of modern design. Pace Development have set the benchmark yet again. A rooftop deck with an infinity lap pool overlooking privileged, uninterrupted vistas of the city skyline, Abbotsford Convent, Victoria Park, Dandenong's, including an alfresco area with rooftop barbecue, sun loungers, garden and well-equipped gymnasium, superb function/library space.

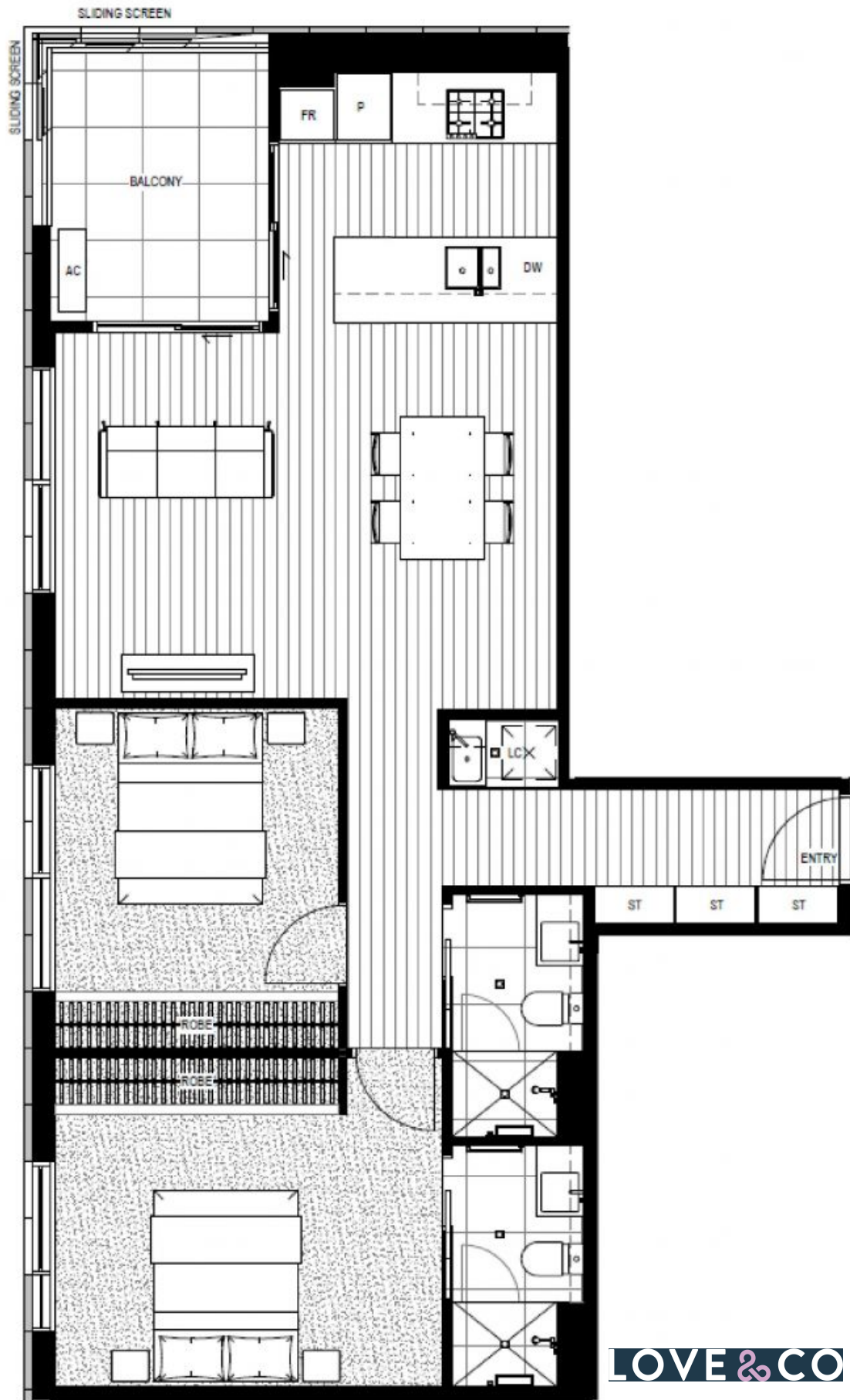
**Price:** SOLD - \$702,500



**Noel Crouch**  
0412 207 117  
noel.c@lovere.com.au



**Daniel Zhang**  
0431 877 093  
Daniel.z@lovere.com.au



610/251 Johnston Street

Abbotsford, VIC

LOVE & CO