



**OPEN FOR INSPECTION**  
GUIDELINES

- In line with the current DHHS Directions, opens for inspection are permitted for fully vaccinated patrons only.
- Each person who enters a venue must use the Service Victoria QR code to check in on arrival.
- Masks must be worn unless an exemption applies.
- Individual who are unwilling to share their vaccination status or are not fully vaccinated may inspect by private appointment only.



3/10 Lantana Avenue Thomastown, VIC



**Pick Of The Bunch!**

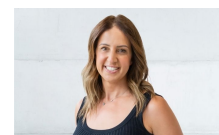
Recently built and located within a short walk of Thomastown Station, schools, shopping and recreation, this 2 bed, 2 bath townhouse is sure to impress even the most fastidious of tenants. Offering ample accommodation, this property includes:

- 2 bedrooms
- Main bedroom with Walk in robe & Ensuite
- 2 bathrooms
- 3 toilets (powder room downstairs)
- Oversized single garage
- Full-sized laundry
- Spacious, low-maintenance courtyard
- Quality inclusions, fixtures and fittings

**Price:** \$380 Per Week



**Toulou Lovett**



**Toulou Lovett**

lovemillpark@mail.inspectrealest.com.au