



415/251 Johnston Street Abbotsford, VIC

 2  2  1

Boutique style living in the perfect location

Welcome to Pace of Abbotsford, presenting this two-bedroom, two-bathroom apartment with its premium inclusions and an amazing array of residents' amenities to enjoy. The home's on-trend interior showcases a modern kitchen with Miele appliances (dishwasher, oven, gas cooktop and rangehood) as well as integrated fridge, spacious bedroom and stylish main bathroom - both with stone-top vanities and a rain-head shower. Other stand-out features include a spacious balcony, split-system heating and cooling, engineered timber floors, double-glazed windows, large storage cupboards and European laundry. Along with video intercom, lift to secure foyer, this exceptional building also boasts a large residents' garden/entertaining area (level 5) with BBQs and sweeping views, plus rooftop pool (level 11), gymnasium, library and additional BBQ terrace. The ultimate convenience of a Woolies Metro on the ground floor, it's also walking distance to a myriad of cafes and eateries, Victoria Park Station, the open spaces of Victoria Park, as well as Dights Falls, Abbotsford Convent and endless trails along the Yarra River.

Price: \$570 per week



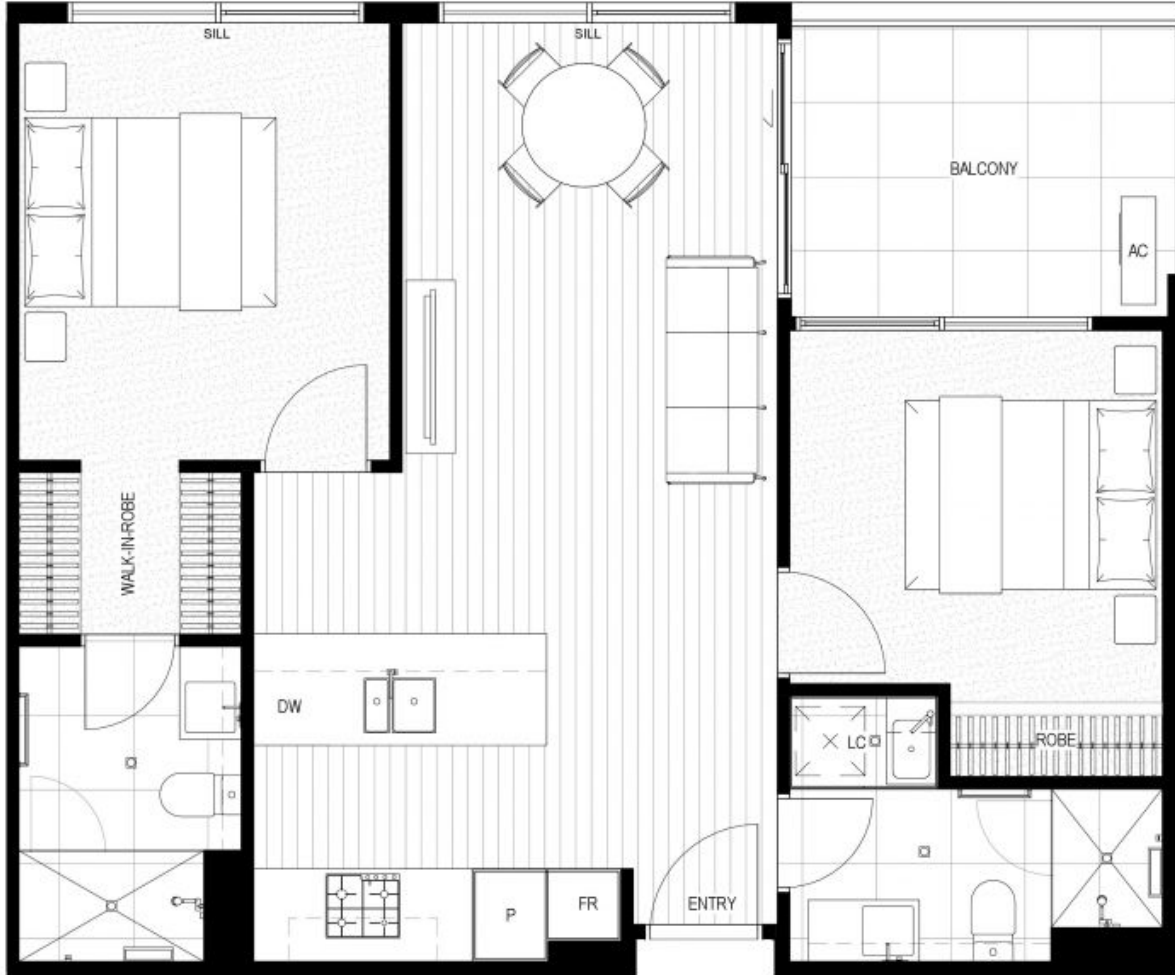
Evie Milides

0421257260

lovecopreston@mail.inspectreale

Apartment 214, 312, 313, 414, 415,
 511, 512

2 bedroom, 2 bathroom & 1 carpark



- SILL Raised Window Sill
- AC A/C Condenser
- DW Dish Washer/Drawer
- FR Integrated Fridge
- LC Laundry Cupboard
- P Pantry

Bedroom	2
Bathroom	2
Carpark	1
Internal area	67m ²
External area	8m ²
Total area	75m ²

