



1-6/333 High Street Thomastown, VIC

 12
  6
  6

**6 UNITS - CORNER BLOCK APPROX 1110m2 LAND**  
**CURRENTLY RETURNING APPROX \$100,000 P**

**Price:** AUCTION THIS SATURDAY AT 1:30PM

Tightly held in the same family since being built, this impressive site is proudly offered to the market for the first time and presents purchasers a truly rare and exceptional opportunity to secure a whole block of units sitting on a massive parcel of land approx 1110m2 in a lucrative Blue Chip location. On offer are 6 fully renovated, spacious BV units, 2 carpeted bedrooms with BIRS, well appointed kitchens, large bathrooms, laundry facilities, car spaces. Currently returning approx \$100,000 per annum, this superb investment opportunity (ideal for SMSF) offers the astute buyer an instant rent yield/great cash flow, or LAND BANK for future capital growth. Unmatched for lifestyle convenience, the units are superbly situated within walking distance to Woolworths Supermarket, the multicultural hub of Station Street and May Road strip shopping, cafes, eateries, train stations, public transport, local schools and major road arterials.

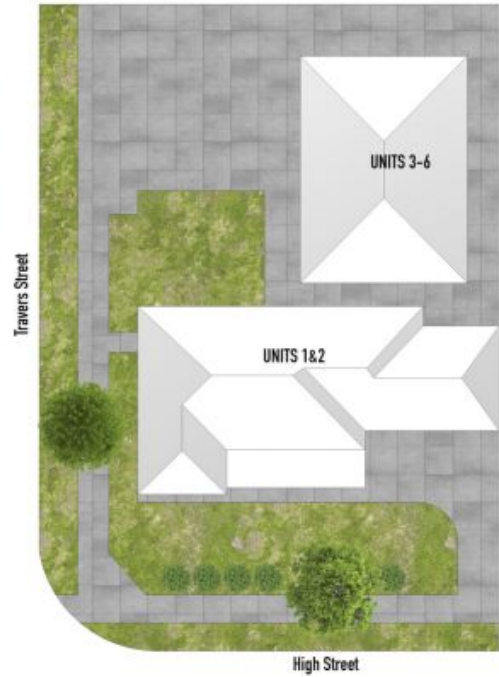
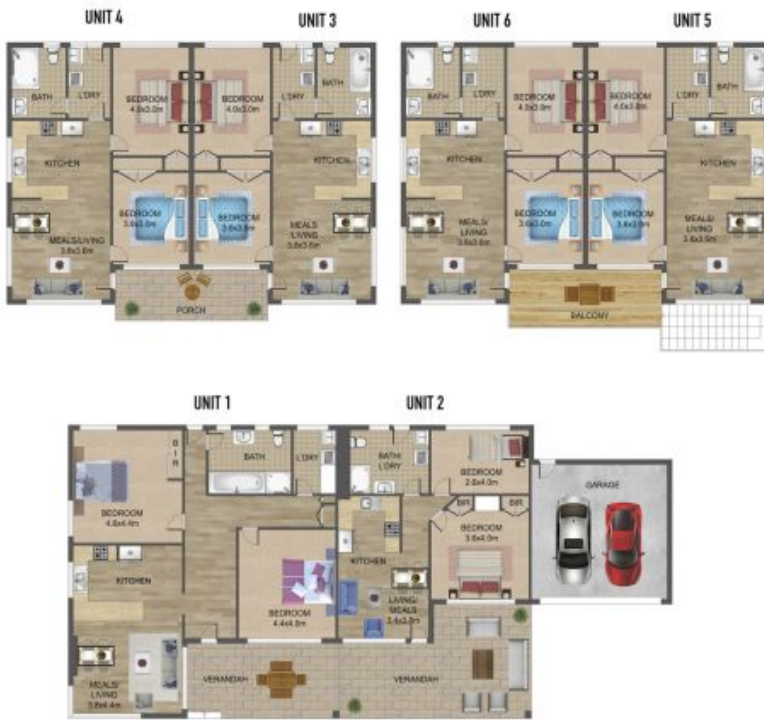


**Ryan Di Natale**  
 0418 330 587  
 ryan.d@lovere.com.au



**Anwar Kattan**  
 0431 169 844  
 anwar.k@lovere.com.au

# 333 High Street, Thomastown



THE ABOVE PLAN IS AN ARTIST'S IMPRESSION ONLY, IT INCLUDES ELEMENTS THAT ARE FOR DISPLAY PURPOSES ONLY AND MAY NOT BE TO SCALE. LANDSCAPING SHOWN IS INDICATIVE ONLY. DIMENSIONS ARE APPROXIMATE.



1-6/333 High Street

Thomastown, VIC