



18 Rosedale Crescent Dallas, VIC



IDEAL LOCATION

Set on a large block of 621m2 approx with wide street frontage offering potential for future improvement or development STCA.

This comfortable family home comprises 3 bedrooms, good size living room, polished timber floors throughout, gas heating, renovated kitchen and bathroom.

A fantastic Location just a short walk distance to Holy Child Primary School, Sirius College, Ilim College, Hume Central Secondary College and parklands. Upfield train Station, Foodworks, caf?s and shopping center in 5 minutes' drive range. Easy access to western ring road and Tullamarine airport.

LOVE & CO PRESTON - NO 1 FOR PROPERTY MANAGEMENT
 INSPECTION BY APPOINTMENT ONLY - REGISTER YOUR INTEREST Please note that all inspection times are subject to change.

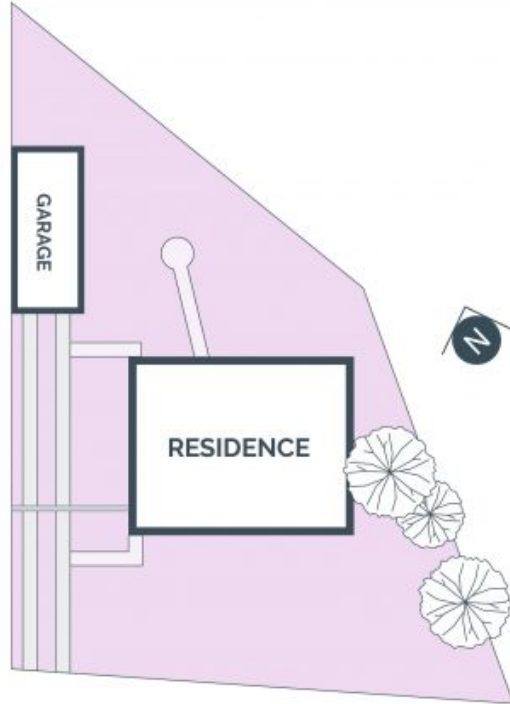
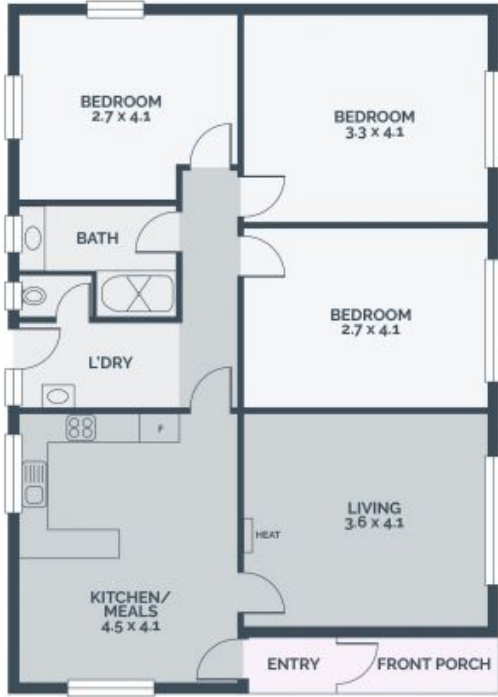
Price: \$300 per week



Marie Demiris

0426 716 935

lovecopreston@mail.inspectreale



Every precaution has been taken to establish accuracy of the information in this brochure but does not constitute any representation by the vendor or agent.

LOVE & CO

LOVE & CO

18 Rosedale Crescent

Dallas, VIC