



2/11 Graham Court Thomastown, VIC



### Ideal rear unit with only 2 on the block

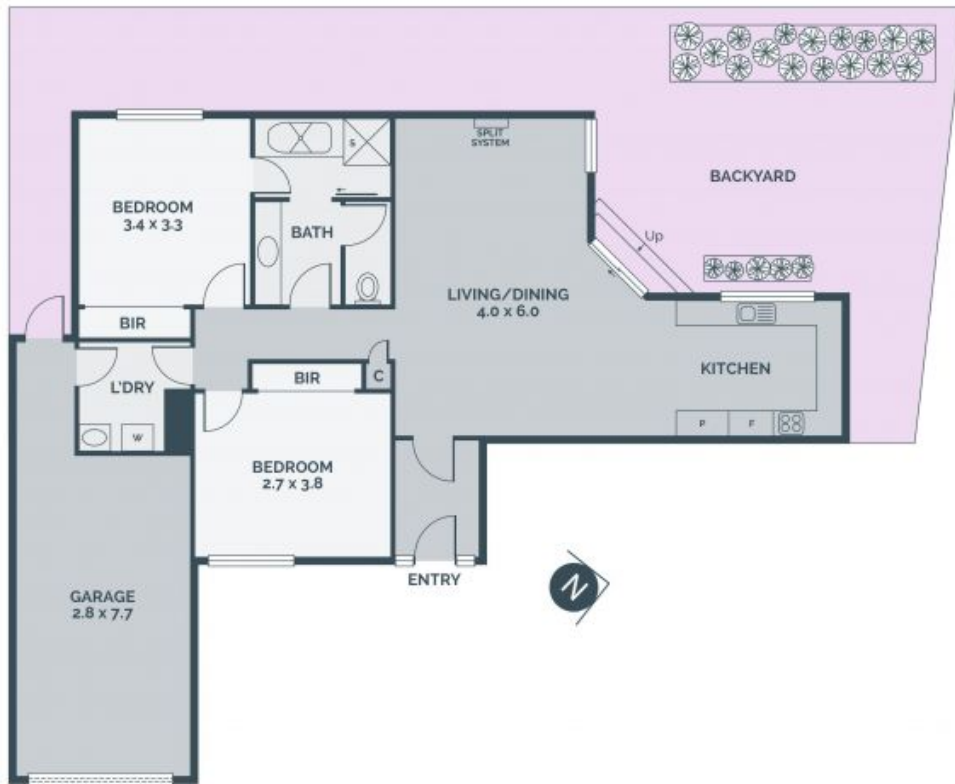
Nestled in a quiet court location, this affordable property offers a fantastic opportunity for astute investors with long standing tenant, as well as first home buyers and down-sizers with low maintenance appeal. Generous loungeroom leads to a kitchen and meal area with gas hotplates, 2 good sized bedrooms with BIRS, central bathroom with separate bath and shower recess, separate toilet and laundry, plus large courtyard and secure garage. Centrally located within close proximity to local schools, the vibrant Station St/May Rd shopping precinct, Lalor Plaza, recreational parks, easy access to public transport and the Ring Road Network.

**Price:** SOLD - \$450,000



**Javit Denizhan**

0422 055 928  
javit.d@lovere.com.au



Every precaution has been taken to establish accuracy of the information in this brochure but does not constitute any representation by the vendor or agent.

LOVE & CO

LOVE & CO

2/11 Graham Court

Thomastown, VIC