



140 Plenty Road Preston, VIC



Best Of Both Worlds
Price range reduced !

An outstanding investment in your future, this multipurpose building represents the ultimate opportunity to secure a prime corner freehold in a highly regarded and tightly held pocket of Preston. Footsteps to cafes, eateries, the tram, Preston South shopping Mall and Woolworths, and passed by trams, buses, bikes, cars and foot traffic this allotment is improved by business space on the ground floor, while the first floor introduces a spacious one bedroom apartment. The ideal set and forget investment with all the advantages of double stream rental income and capital growth, it will also suit those looking to enjoy a 30 second trip to work, without it impacting their home life!

Currently dual rental leases are in place (Month to Month) ? Market Value for rental, price has not been increase due to COVID
 - Upstairs ? Residential lease

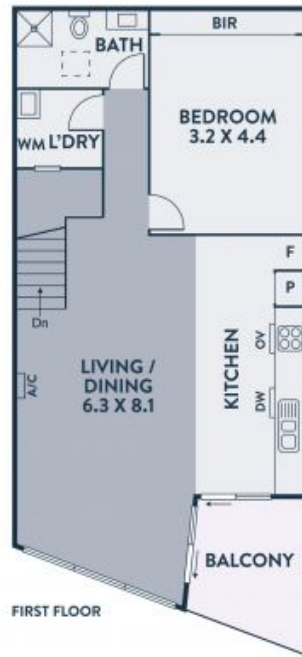
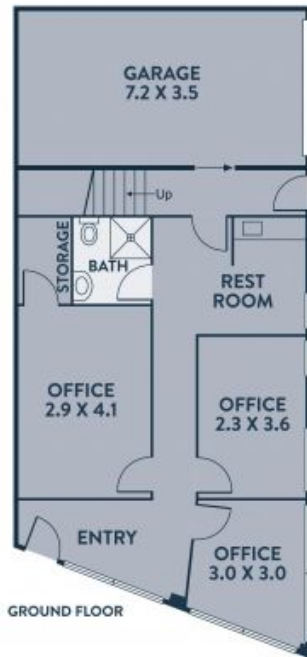
Price: Contact Agent



Noel Crouch
 0412 207 117
 noel.c@lovere.com.au



Daniel Zhang
 0431 877 093
 Daniel.z@lovere.com.au



Every precaution has been taken to establish accuracy of the information in this brochure but does not constitute any representation by the vendor or agent.

