



10/50 Wedge Street Epping, VIC



2



1



1

Instant Appeal In A Super Spot

Along with a position a short walk to the Epping Station, the Epping Plaza, schools and local shops, this single level home comes with the added bonus of very generous garden surrounds, which include a paved alfresco in the private rear yard, an enticing place for easy entertaining! Two robed bedrooms sharing the family bathroom complement a large meals area integrating a solid timber kitchen, and an equally spacious lounge that enjoys a garden outlook! Ready to move in and enjoy, astute buyers can look to add their own value adding contemporary touches when time and budget permit.

- ? Pedestrian entry from High Street
- ? Gas heating
- ? Air-conditioner plus split system unit
- ? True laundry
- ? Garage

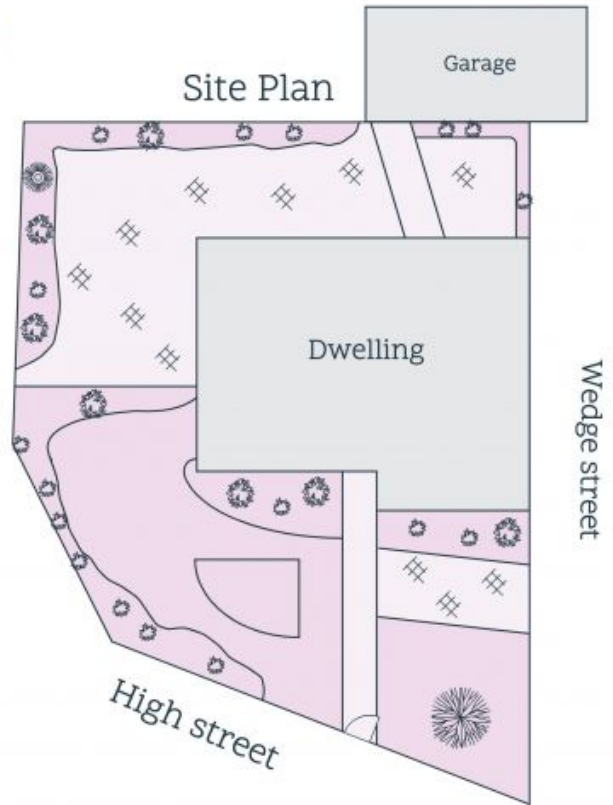
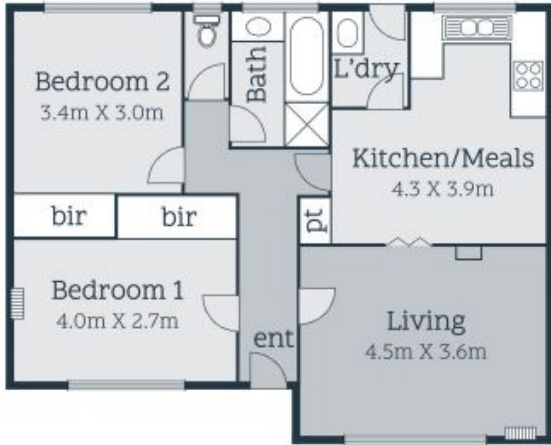
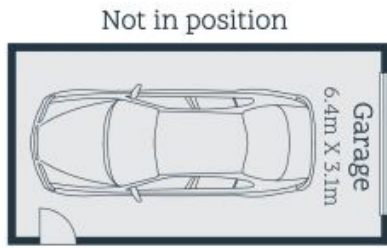
Price: SOLD - \$447,000



Ken Gu

0433 428 060

ken.g@lovere.com.au



Every precaution has been taken to establish accuracy of the information in this brochure but does not constitute any representation by the vendor or agent