



17 Lawson Crescent Thomastown, VIC

PRIME LOCATION IN THOMASTOWN

Excellent brick factory with a total of 442SQM (approx.) comprising:

- Container height roller door
- 3 phase power
- Male and female toilets
- 3 car spaces
- Office space of 30 SQM (approx.)
- Two mezzanine areas of 54SQM (approx.)
- Warehouse area of 388 SQM (approx.)
- Available from 01/03/2021

Council Rates: \$0.00 p/q
Water Rates: \$0.00 p/q
Strata Rates: \$0.00 p/q

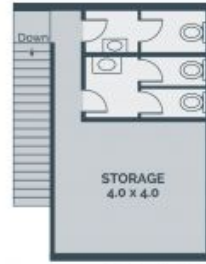
Rental: \$35,000 pa, \$2,916.66 pcm, \$673.07 pw (Plus Outgoings & GST)



Michael Sabelberg
 0450 554 317
 michael.s@lovere.com.au



Branko Agatanovic
 0448 035 565
 branko.a@lovere.com.au



MEZZANINE



Every precaution has been taken to establish accuracy of the information in this brochure but does not constitute any representation by the vendor or agent.

LOVE & CO

LOVE & CO

17 Lawson Crescent

Thomastown, VIC