



140 Melville Road Brunswick West, VIC

**OUTSTANDING RETAIL/ OFFICE WITH GREAT EXPOSURE**

- 90SQM (approx.)
- Convenient onsite parking
- Heating/Cooling
- Alarm
- Staff amenities
- Property available now

Rental: \$19,900 pa, \$1,658.33 pcm, \$382.69 pw (Plus Outgoings and GST)



**Branko Agatanovic** **Michael Sabelberg**

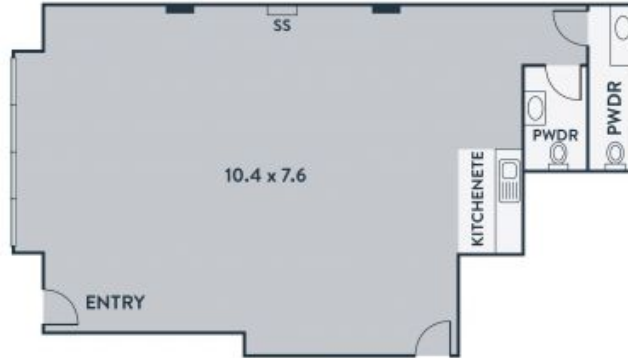
0448 035 565

branko.a@lovere.com.au



0450 554 317

michael.s@lovere.com.au



Every precaution has been taken to establish accuracy of the information in this brochure but does not constitute any representation by the vendor or agent.

LOVE & CO

140 Melville Road

Brunswick West, VIC

LOVE & CO