



15/5 Delacombe Drive Mill Park, VIC

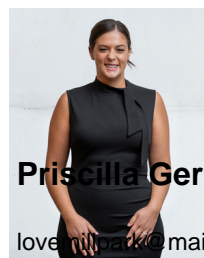


IMPECCABLE TOWNHOUSE SET AMONGST LUSH STUNNING GREENERY!!!

Nestled amongst idyllic nature reserves with tranquil creeks and jogging tracks right at your doorstep, this immaculately kept townhouse is truly a perfect home in a highly sought-after, convenient Mill Park location.

Upon entry, indulge yourself in a bright-and-open ambience thanks to a light-filled family lounge and a large ground-floor bedroom set against the stunning parkland backdrop. Enjoy an open-plan dining/kitchen, stainless steel gas appliances, dishwasher, sleek modern cabinetry and an adjacent courtyard. Upstairs showcases a master bedroom with private balcony and a sweeping greenery outlook, stylish shower ensuite and walk-in wardrobe. Also upstairs is an additional bedroom with BIR, main bathroom with full-sized bath, separate glass shower, dual-access WC and bonus storage cupboards. Complimented by downlights, evaporative cooling, ducted heating, dedicated laundry, guest powder room and an oversized remote-controlled garage that leaves space for storage.

Price: \$420 Per Week



Priscilla Geroulis

love@millpark@mail.inspectre



Priscilla Geroulis

love@millpark@mail.inspectrealest