



33B Strong Avenue Thomastown, VIC

EASY RING ROAD ACCESS

Factory/warehouse in a sought after Industrial pocket.

- Container Height roller door
- Factory area: 520 SQM (approx) including amenities of 30 SQM (approx)
- Easy access to Edgars, Mahoneys and The Ring Road
- 3 Phase power run to the switch board
- Lock up carpark with 12 spaces
- Zoned Industrial One.

Rental:

\$42,000 pa, \$3,500 pcm, \$807.69 pw (plus Outgoings & GST)



Branko Agatanovic **Michael Sabelberg**

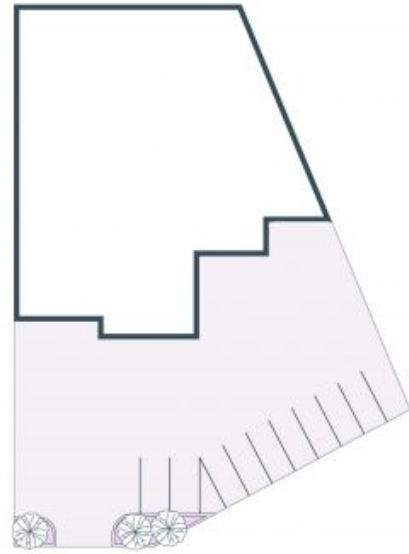
0448 035 565

branko.a@lovere.com.au



0450 554 317

michael.s@lovere.com.au



Every precaution has been taken to establish accuracy of the information in this brochure but does not constitute any representation by the vendor or agents.



33B Strong Avenue

Thomastown, VIC

