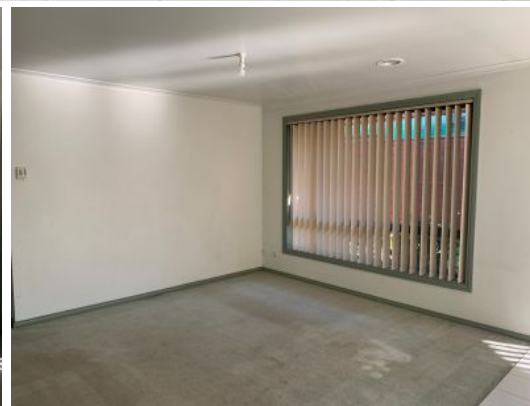


Under Application

Love&Co Mill Park



2/6 Hayley Court Mill Park, VIC



QUIET COURT LOCATION!

This spacious and comfortable unit is positioned in a quiet court.

Price: \$460 Per Week

Comprising;

- Three bedrooms all with built in robes
- Open plan lounge and kitchen meals area
- Wall to wall carpets
- Good size court yard
- Single lock-up garage

NEAREST SCHOOL: Mill Park Heights Primary, Mill Park Secondary College, Findon Primary School.

NEAREST TRANSPORT: Walking distance to bus stops and a short drive to Epping Station and South Morang Station.



Merve Ozer



Merve Ozer

lovemillpark@mail.inspectrealest.com.au | lovemillpark@mail.inspectrealest.com.au