



1/42 Cooper Street Epping, VIC

 1
  1
  1

### Grand Entry Level Living

Situated within the heart of Epping this immediately inviting oversized one-bedroom property is enhanced by bright natural light. Upon entering you are greeted by the impressively spacious living area providing ample room for dual living and dining options. The well-appointed L-shaped kitchen, finished with stainless steel appliances, provides all the cupboard and bench space you would ever need. All this is finished off with a full-sized laundry, modern bathroom, single car carport and low maintenance private courtyard. Centrally located and a short walk from Epping Railway Station, Epping Plaza and Northern Hospital.

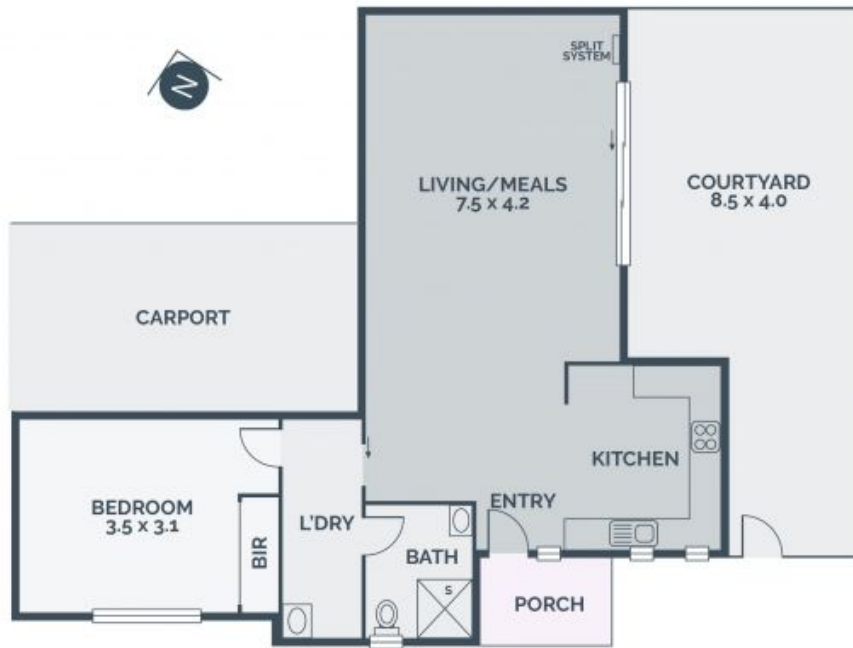
**Price:** SOLD - \$296,000

- \* Built In Robe's
- \* Single Car Carport
- \* Split System heating and Cooling
- \* Full size laundry
- \* Tiled Kitchen with Stainless Steel Appliances



**Michael Love**

0400 106 577  
 michael.l@lovere.com.au



Every precaution has been taken to establish accuracy of the information in this brochure but does not constitute any representation by the vendor or agent.