



3/16 The Link Mill Park, VIC

**CONVENIENT LOCATION!**

Modern complex with upstairs open plan office space available for lease.

- Featuring private balcony
- Heating/cooling
- Secured on-site parking and staff amenities

**Council Rates:** \$0.00 p/q  
**Water Rates:** \$0.00 p/q  
**Strata Rates:** \$0.00 p/q

With easy access to major arterials and successful neighbouring tenancies this versatile space will suit numerous uses STCA.

Total Area: 226sqm

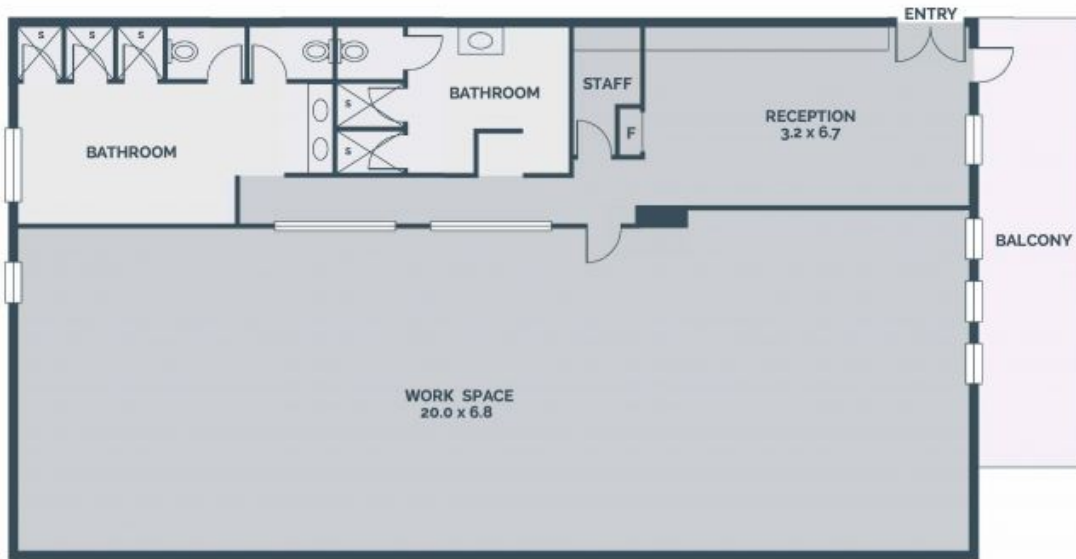
Rental:  
 \$28,000 pa \$2,333.33 pcm \$538.46 pw  
 (Plus Outgoings & GST)



**Branko Agatanovic Michael Sabelberg**

0448 035 565  
 branko.a@lovere.com.au

0450 554 317  
 michael.s@lovere.com.au



Every precaution has been taken to establish accuracy of the information in this brochure but does not constitute any representation by the vendor or agent.

**LOVE & CO**

**LOVE & CO**

**3/16 The Link**

**Mill Park, VIC**