



1/1 Small Court Mill Park, VIC



2



1



1

Perfect Location!

Set in easy to manage gardens and with loads of living space indoors and out, this is a rare opportunity in a convenient location. Parks moments away, Epping Station, primary, secondary and pre-schools all around and the Plaza are all within easy reach. A perfectly presented interior offering two bedrooms, large living room, spacious light filled family meals, central bathroom, complemented by a solid timber kitchen. Don't miss your chance to rent this beautiful family home!

- ? Fitted laundry
- ? Single garage
- ? Ducted heating & Evaporative cooling
- ? Large living area
- ? Solid timber kitchen
- ? Street fronted

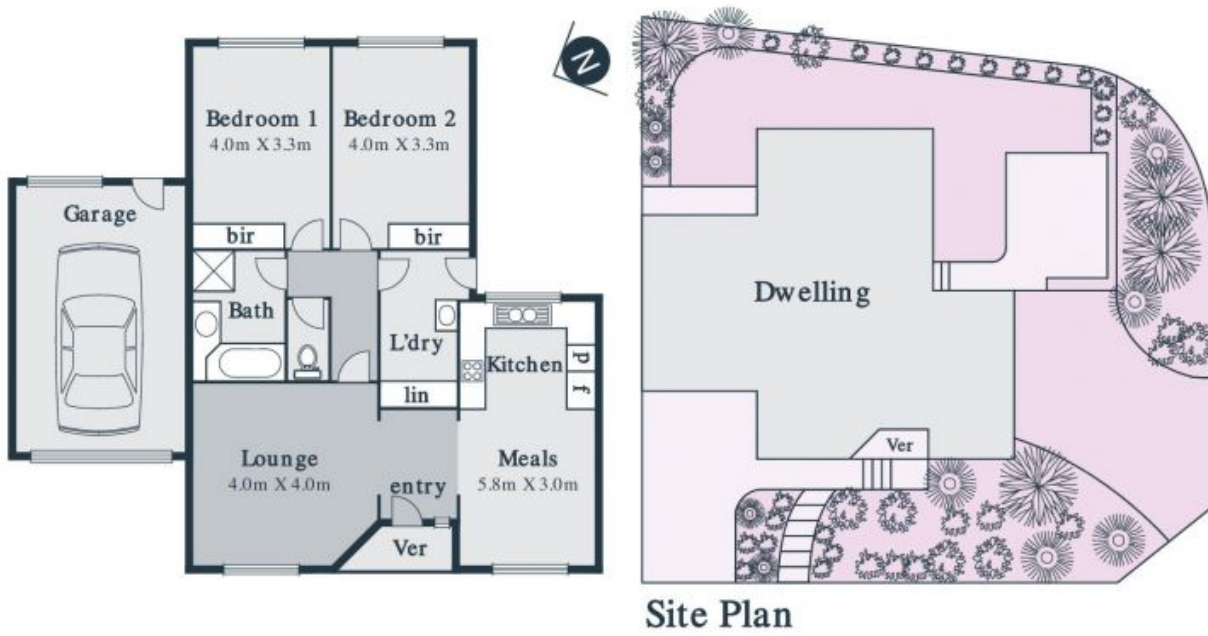
Price: \$350 Per Week



Michael Love

0400 106 577

lovemillpark@mail.inspectrealest



Every precaution has been taken to establish accuracy of the information in this brochure but does not constitute any representation by the vendor or agent