



1/31 Pardy Street Pascoe Vale, VIC
 3  2  2

Street Frontage Prestige And Location

This exciting and enticing town-residence showcases quality, quantity and luxury living in a sought-after location. Unmarked paint work, premium carpets and high gloss timber floors feature in an interior introducing spacious open plan living stretching out from a deluxe kitchen featuring stone waterfall benches and gliding out through glass doors to a private courtyard.

Set on the first floor are three bedrooms. The main offers a fitted walk-in robe and the luxury of a stone ensuite, while the remaining two bedrooms include fitted robes and share a bathroom of equal style and sophistication. Zoned to Strathmore Secondary College, Cumberland Road Village nearby and within walking distance to Pascoe Vale Train Station and adjoining bus services.

? Garage with internal access

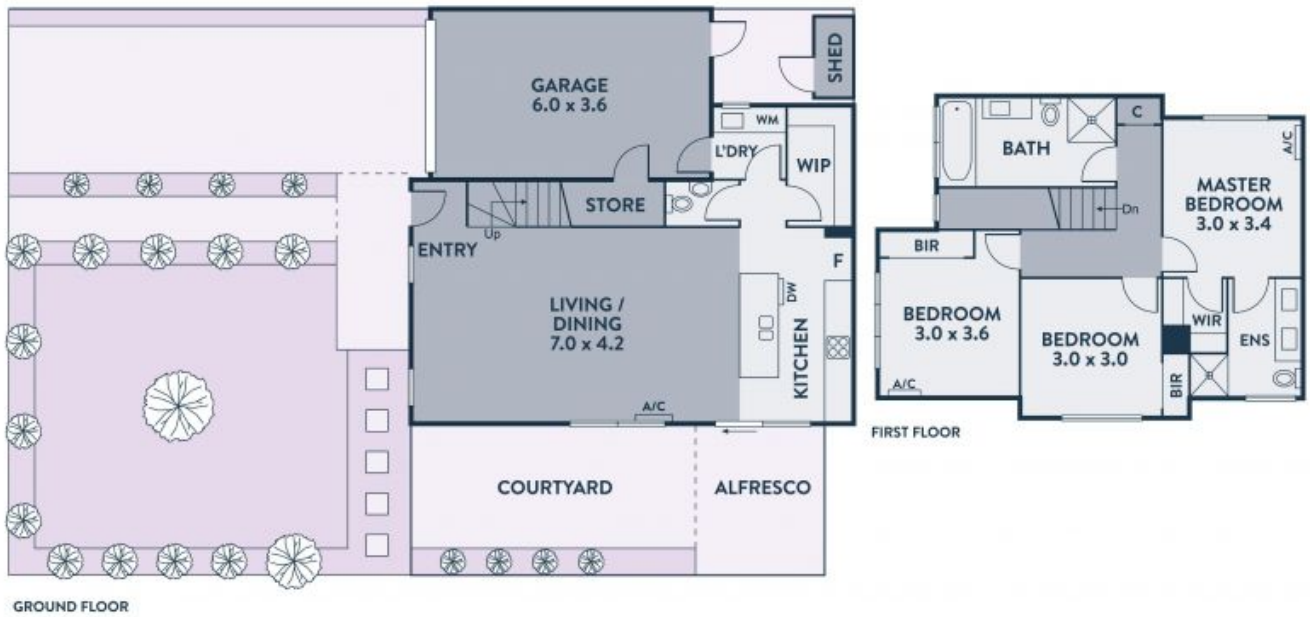
Price: \$776,000



Noel Crouch
0412 207 117
noel.c@lovere.com.au



Noel Crouch
0412 207 117
noel.c@lovere.com.au



Every precaution has been taken to establish accuracy of the information in this brochure but does not constitute any representation by the vendor or agent.

