



36A Edwardes Street Reservoir, VIC

CENTRAL RESERVOIR OFFICE SPACE!

First floor office / studio space of 280 sqm (approx) located in the heart of Reservoir with separate access from Edwardes Street and rear car parking. Features includes large open rooms, lunch room / kitchenette and separate toilets. Will suit a variety of uses (STCA). Long term lease available.



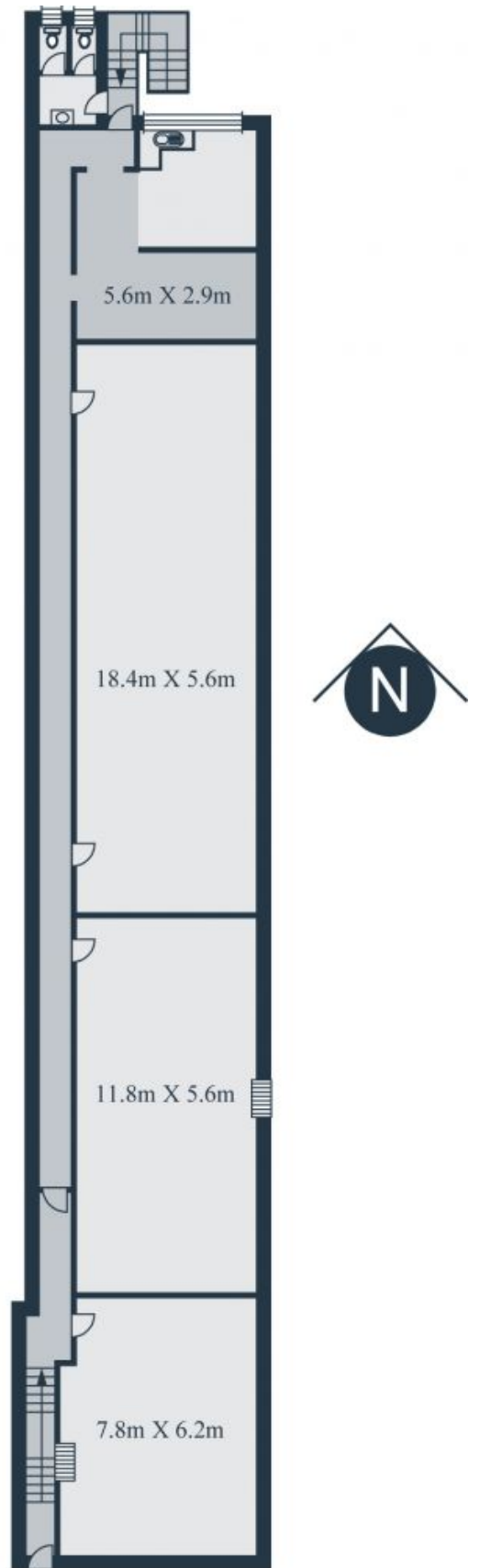
Graham Love

0418 534 450
graham.l@lovere.com.au



Branko Agatanovic

0448 035 565
branko.a@lovere.com.au



Every precaution has been taken to establish accuracy of the information in this brochure but does not constitute any representation by the vendor or agent



36A Edwardes Street

Reservoir, VIC