



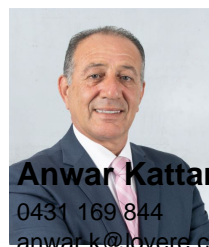
11 Regal Avenue Thomastown, VIC



MODERN APPEAL ? CORNER LOCATION

Occupying a highly sought after 529 approx corner allotment in a very desirable location, with the convenience of having everything you need at your doorstep, this beautifully updated BV family home is certain to attract a variety of astute buyers. Walk to Lalor Plaza, both primary and secondary schools, bus stops, recreational park, easy access to Plenty Road & RMIT, major road arterials and freeways. Comprising lounge room, new kitchen equipped with gas cooktop/electric oven, tiled splashback, bright meals area, 3 good sized bedroom, updated family bathroom, and separate laundry. Featuring timber flooring, ducted heating, wall mounted air conditioner, downlight, quality window furnishings, terracotta tiled roof, covered al fresco entertaining area, large carport for 3 cars, low maintenance gardens, potential to subdivide or redevelop (STCA) plus so much more

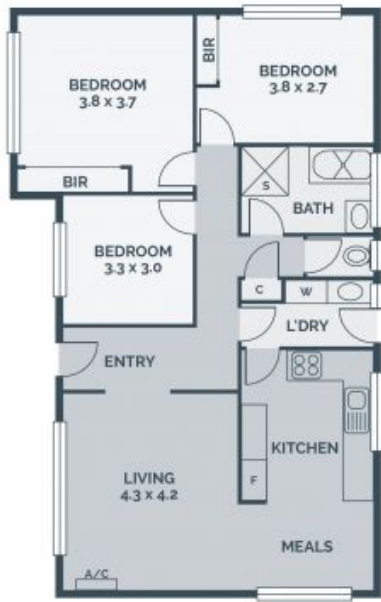
Price: AUCTION THIS SATURDAY AT 11:30am



Anwar Kattan
0431 169 844
anwar.k@lovere.com.au



Ryan Di Natale
0418 330 587
ryan.d@lovere.com.au



Every precaution has been taken to establish accuracy of the information in this brochure but does not constitute any representation by the vendor or agent.

LOVE & CO

LOVE & CO

11 Regal Avenue

Thomastown, VIC