



47 Barry Road Thomastown, VIC

## GROUND FLOOR OFFICE/MEDICAL FACILITY

This multi-purpose office/ medical centre is prominently located on the corner of Barry Road and Patrona Street and may suit a variety of different uses.

- Building area of 143 SQM (approx.)
- Four consulting rooms/ offices
- Prominent Corner Location
- Five on-site car spaces
- Existing permit for a Dentist
- Excellent staff amenities

\$28,490.00 pa, \$2,374.16 pcm, \$547.88 pw  
(Plus Outgoings and GST)

**Council Rates:** \$0.00

**Water Rates:** \$0.00

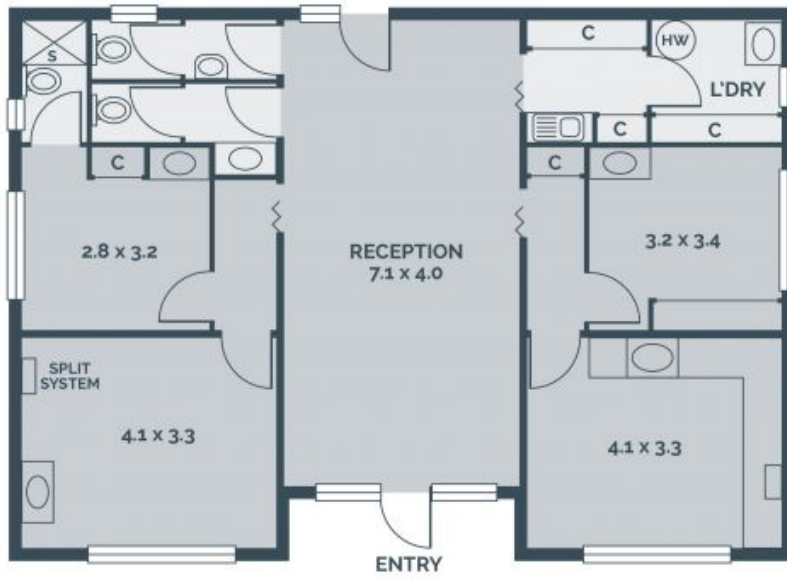
**Strata Rates:** \$0.00



**Branko Agatanovic**

0448 035 565

branko.a@lovere.com.au



Every precaution has been taken to establish accuracy of the information in this brochure but does not constitute any representation by the vendor or agent.

LOVE & CO

LOVE & CO

47 Barry Road

Thomastown, VIC