



4/16 Elsey Road Reservoir, VIC

 2
  1
  1

**Stylish Space And A Superb Alfresco - no owners corp fees.**

Downsizers, investors and first-home buyers will love the light filled layout of this town residence. Just 600m from Ruthven Station and enjoying easy access to all the lifestyle benefits the centre of Reservoir has to offer. Easy care tiles feature throughout a generous, ground floor open plan living area making a seamless transition to an undercover, decked alfresco. Effectively doubling the summer living spaces, easy indoor-outdoor enjoyment is assured! Two first floor bedrooms, one with balcony, are served by a family bathroom featuring floor to ceiling tiles. Brimming with benefits, you don't want to miss this!

- \* Guest powder room
- \* Kitchen with quality appliances
- \* Concealed laundry
- \* Two bedrooms, one with balcony

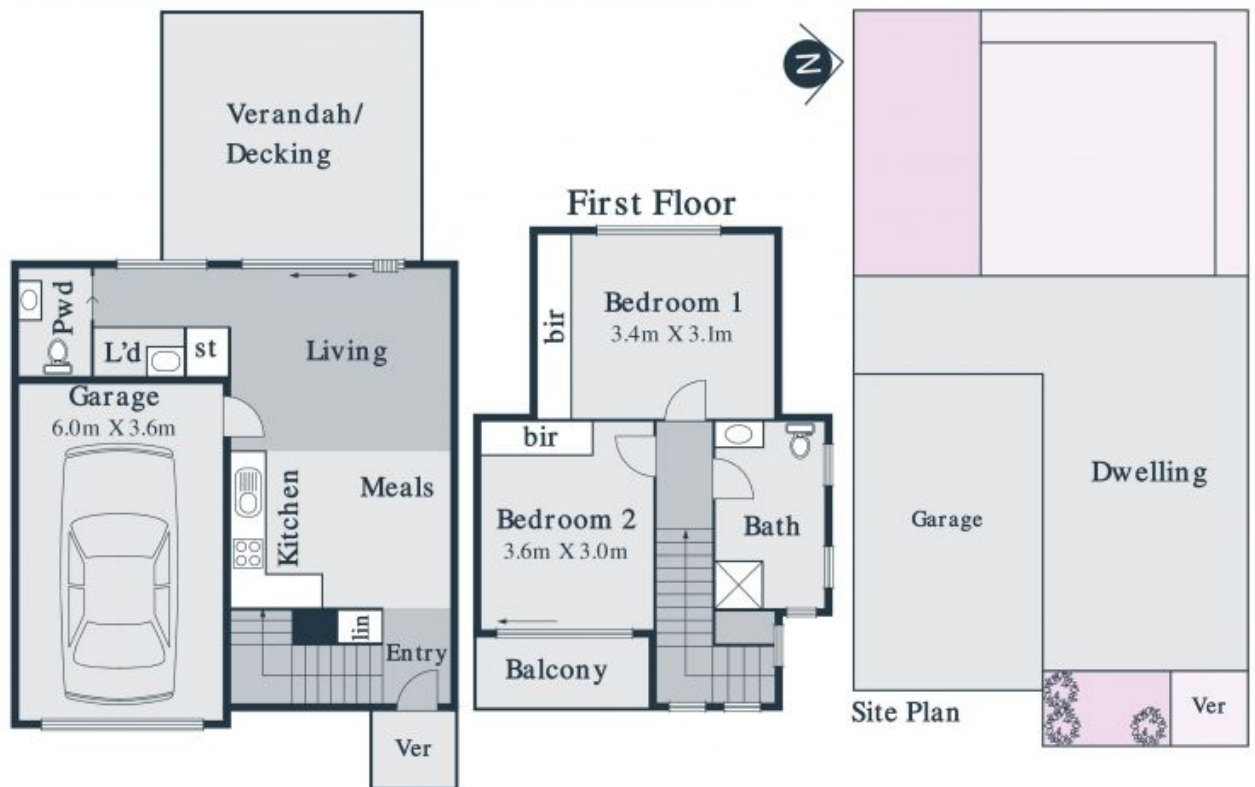
**Price:** \$425,000



**Noel Crouch**  
0412 207 117  
noel.c@lovere.com.au



**Noel Crouch**  
0412 207 117  
noel.c@lovere.com.au



Every precaution has been taken to establish accuracy of the information in this brochure but does not constitute any representation by the vendor or agent