



23/58 Mahoneys Road Thomastown, VIC

PERFECT CORNER POSITION

Warehouse with excellent mezzanine office - total 270 m², available Mahoneys Road Business Park.

Located close to Western Ring Road, Edgars Road and Hume Hwy.

Features Include:

Warehouse of 224 m²

Carpeted 46 m² first floor office.

Heating/Cooling

6 on site car spaces.

Container eight electric roller door.

Kitchenette.

Price: \$29,580.00 PA + Outgoings + GST

\$2,465.00 PCM + Outgoings + GST.

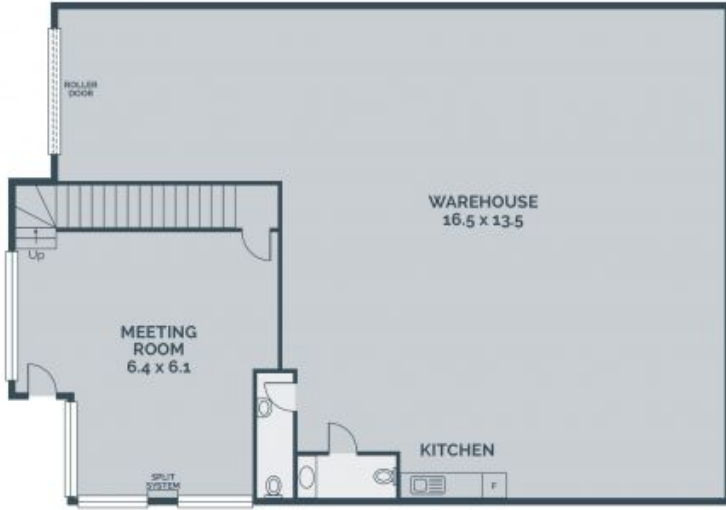
Details of Outgoings:



Branko Agatanovic

0448 035 565

branko.a@lovere.com.au



GROUND



LEVEL 1

Every precaution has been taken to establish accuracy of the information in this brochure but does not constitute any representation by the vendor or agent.

LOVE & CO

LOVE & CO

23/58 Mahoneys Road

Thomastown, VIC