



15 Yumburra Parade Wollert, VIC



### Inviting Single Level Living

Nestled in the heart of the popular Eucalypt Estate, with Pine Park wetlands and playground along with the bus to the station and Epping Plaza at the end of the street, this home offers easy to live with style and family friendly space.

The easy flowing design features a central hallway opening to three bedrooms (main with ensuite, oversize shower) and the lounge, before it ends up in the spacious open plan living meals, stepping out to a low maintenance rear yard for that sought-after blend of indoor-outdoor enjoyment!

- ? Kitchen with stainless steel appliances
- ? Large breakfast bar for meals on the go
- ? Ducted heating and cooling
- ? Garage with auto door, internal access

**Price:**

Contact Agent



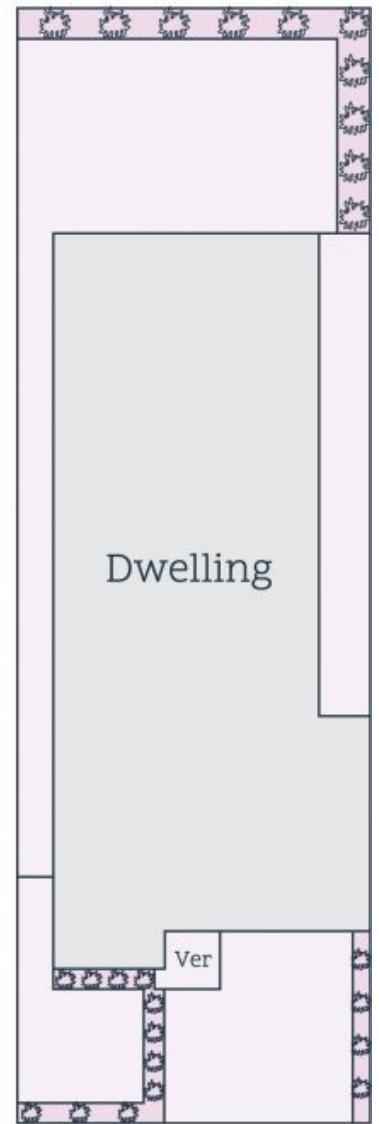
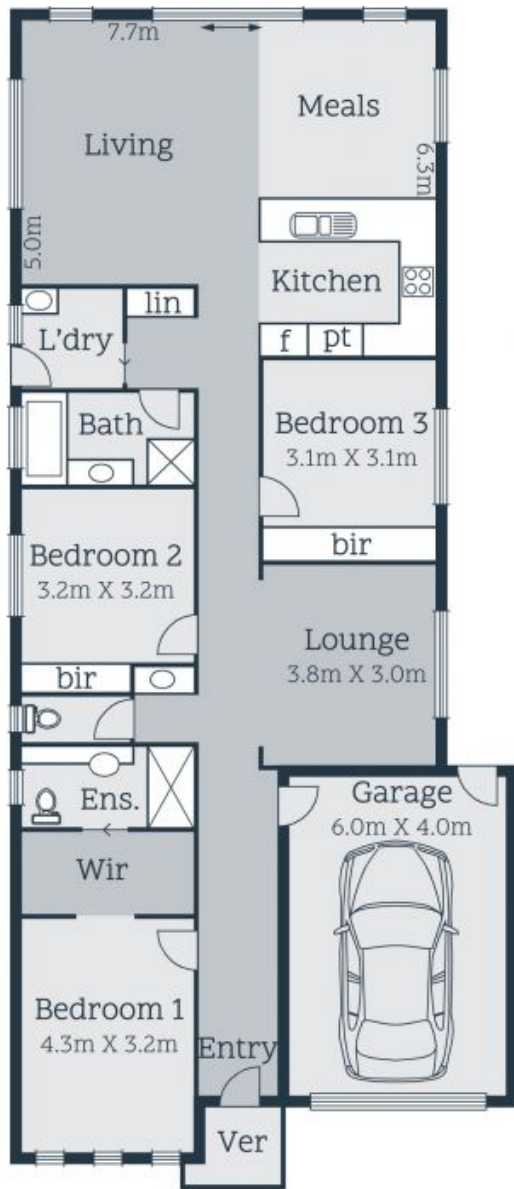
**Jim Kalakias**

0402 177 336  
jim.k@lovere.com.au



**George Stathopoulos**

0403 053 836  
george.s@lovere.com.au



Site Plan

Every precaution has been taken to establish accuracy of the information in this brochure but does not constitute any representation by the vendor or agent

