



14-16 Williams Road Coburg, VIC

CORNER THE MARKET!

This well established office/warehouse only 9 kilometres from the CBD and in close proximity to Sydney Road and Gaffney Street with comfortable walking distance to train. Property will suit a wide range of tenancies and is available now.

Additional features include:

- High Clearance warehouse area of 450SQM (approx)
- Mezzanine area of 98SQM (approx)
- Office area of 116SQM (approx)
- Air-conditioned 1st floor office area
- Ground floor amenities
- 5 onsite parking spaces
- 3 phase power
- Industrial 1 Zoning
- Container height roller door access



Branko Agatanovic

0448 035 565

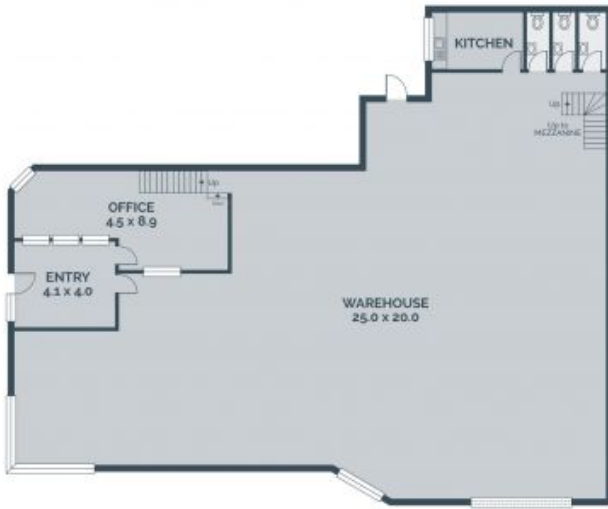
branko.a@lovere.com.au



Michael Sabelberg

0450 554 317

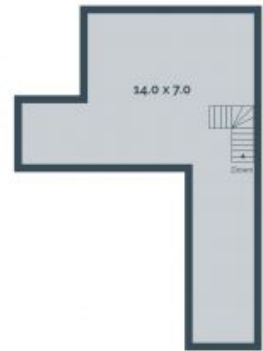
michael.s@lovere.com.au



GROUND FLOOR



LEVEL 1



MEZZANINE

Every precaution has been taken to establish accuracy of the information in this brochure but does not constitute any representation by the vendor or agent.

LOVE & CO

LOVE & CO

14-16 Williams Road

Coburg, VIC