



3/262 Wolseley Place Thomastown, VIC

GOOD SIZE! GOOD PRICE!

- Building area 536 sqm
- Land Area 583 sqm
- Office Area 80 sqm
- 5 Car spaces
- Container height RSD
- Secure and gated
- Zoned industrial 1

Situated in a sought after industrial estate close to the Ring Road this quality office/warehouse represents very good value.

Rental:

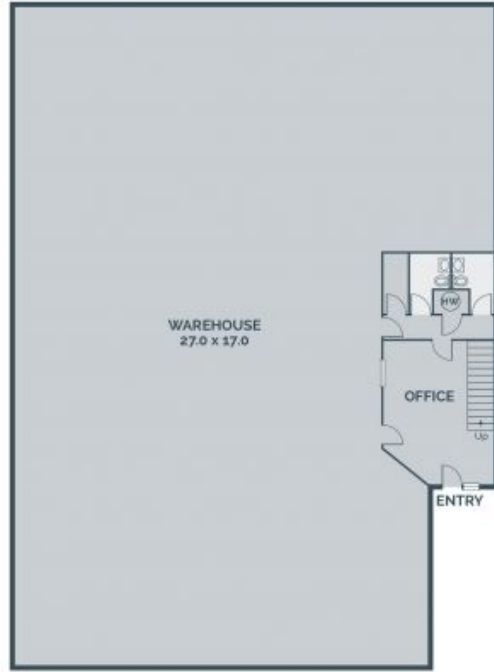
\$36,900 pa \$3,075 pcm \$709.61 pw (Plus outgoings and GST)



Branko Agatanovic

0448 035 565

branko.a@lovere.com.au



GROUND FLOOR



LEVEL 1

Every precaution has been taken to establish accuracy of the information in this brochure but does not constitute any representation by the vendor or agent.

LOVE & CO

LOVE & CO

3/262 Wolseley Place

Thomastown, VIC