



14/30-34 Maffra Street Coolaroo, VIC

WEL LOCATED FACTORY / WAREHOUSE

Great opportunity for owner occupiers or investors, located just off Barry Road, close to the Hume Highway and excellent access to major arterial roads.

- ? 375 m2 Building Size
- ? 275 m2 Land Size
- ? 5 Customer Parking Spaces
- ? Currently returning \$20,400 P.A
- ? High Roller Door Access
- ? Waiting Room/ Office Space

Price:

CONTACT AGENT



Anwar Kattan

0431 169 844
anwar.k@lovere.com.au



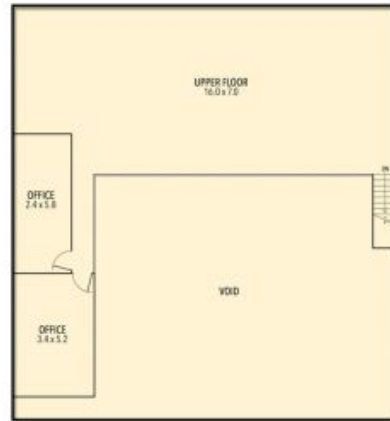
Sam Dirani

0411 847 851
sam.d@lovere.com.au

14/30-34 Maffra Street, Coolaroo



GROUND FLOOR



FIRST FLOOR

THE ABOVE PLAN IS AN ARTIST'S IMPRESSION ONLY, IT INCLUDES ELEMENTS THAT ARE FOR DISPLAY PURPOSES ONLY AND MAY NOT BE TO SCALE. LANDSCAPING SHOWN IS INDICATIVE ONLY. DIMENSIONS ARE APPROXIMATE.

LOVE & CO

14/30-34 Maffra Street

Coolaroo, VIC