



10 Fabio Court Campbellfield, VIC

SUIT MOTOR VEHICLE TRADES!

SUIT MOTOR VEHICLE TRADES!

Modern corporate office warehouse, ideally positioned 20 kms* from Melbourne CBD & minutes from the Hume Hwy & Melbourne's main arterials. Property comes with fitted equipment as detailed below:

- 280SQM (approx) of warehouse space - 50SQM (approx) of office space
- 3 Phase power - 3 car spaces
- Container height electric roller door - Zoned industrial one (IND1)

The following pieces of equipment are available with the property, for sale at \$25,000.00

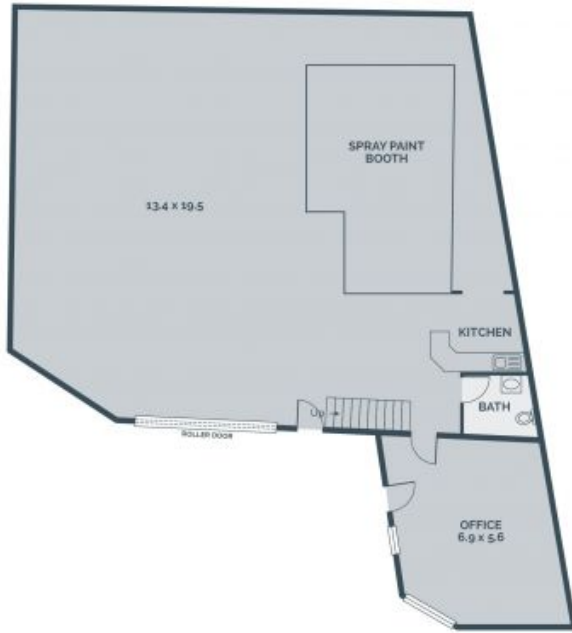
- The equipment includes:
 - Low bake spray booth oven
 - Low bake paint mixing room
 - Tuff lift hoist
 - E-max compressor
 - Air lines



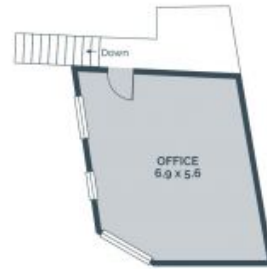
Branko Agatanovic

0448 035 565

branko.a@lovere.com.au



GROUND LEVEL



MEZZANINE

Every precaution has been taken to establish accuracy of the information in this brochure but does not constitute any representation by the vendor or agent.

LOVE & CO