



28 Eagle Avenue Kingsbury, VIC



3



1



2

## Your New Home!

Enhanced and brought to life with an attractive list of extras is this family home which will enable a terrific lifestyle.

- Three bedrooms all with built in robes.
- A central sparkling bathroom with separate bath
- Large lounge to front of the home
- Updated kitchen/meals area with dishwasher and more cupboard space than you will know what to do with.
- Ducted heating & Evaporative cooling
- Polished timber floors throughout
- Secure lock up garage
- Low maintenance front and rear garden.

Closely located to local primary and secondary schools, Plenty Road public transport options & Link Street shopping strip, this is one house you will see and fall in love with.

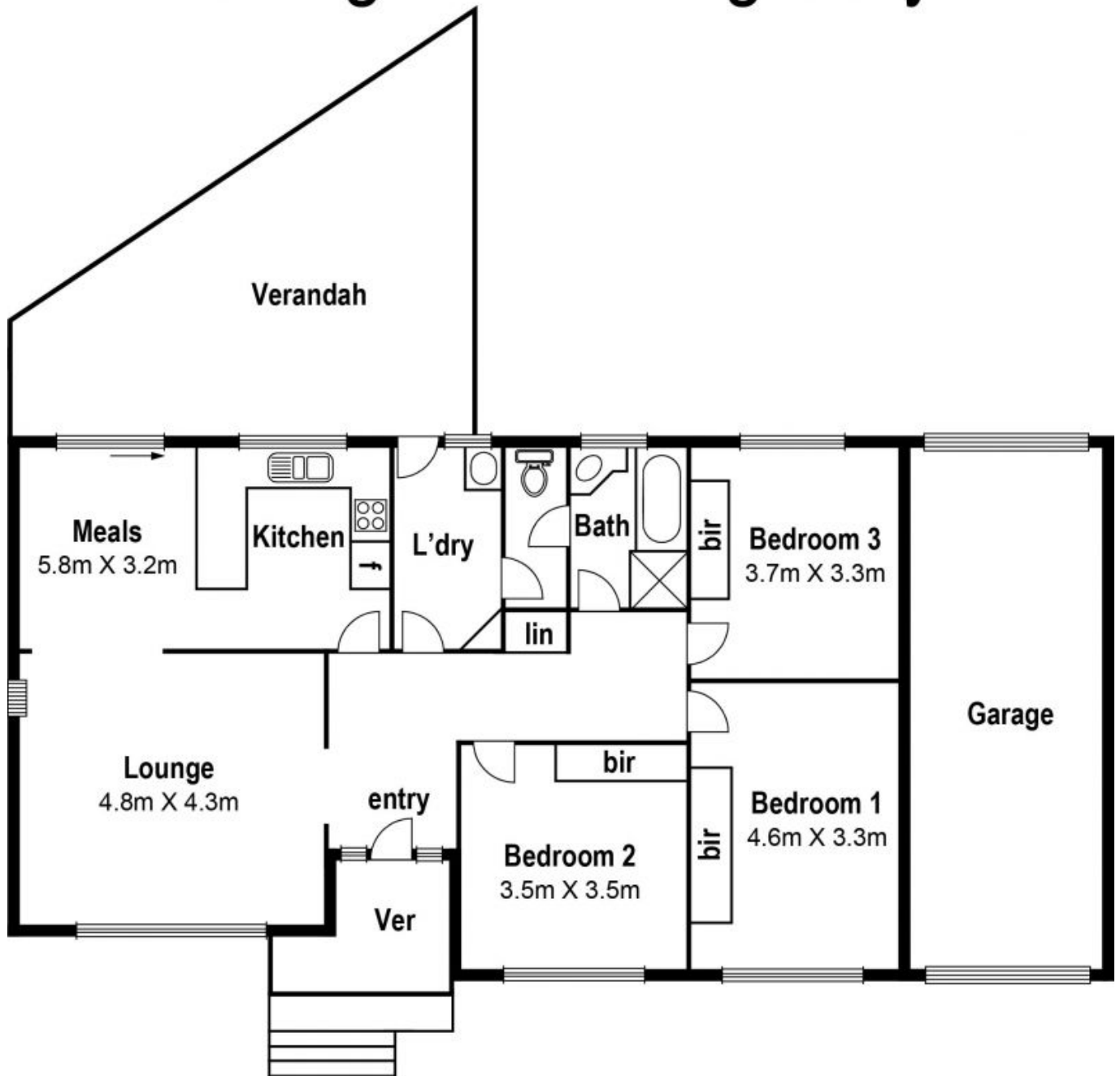
**Price:** \$400-\$420 PW



**Rachael Wallace**

loverealestate@mail.inspectreale

# 28 Eagle Ave. Kingsbury



## Site Plan

