



313 Spring Street Reservoir, VIC

EXCELLENT LOCATION WITH GREAT EXPOSURE

- Retail premises of 110 sqm
- Dual access (Spring Street & Coles Carpark)
- Main road exposure
- Ample customer parking
- Zoned Business 1
- Suited to a variety of retail activity

Your neighbours include Coles Supermarket, Bottle O and Pizza Hut. Join the successful businesses in the area!

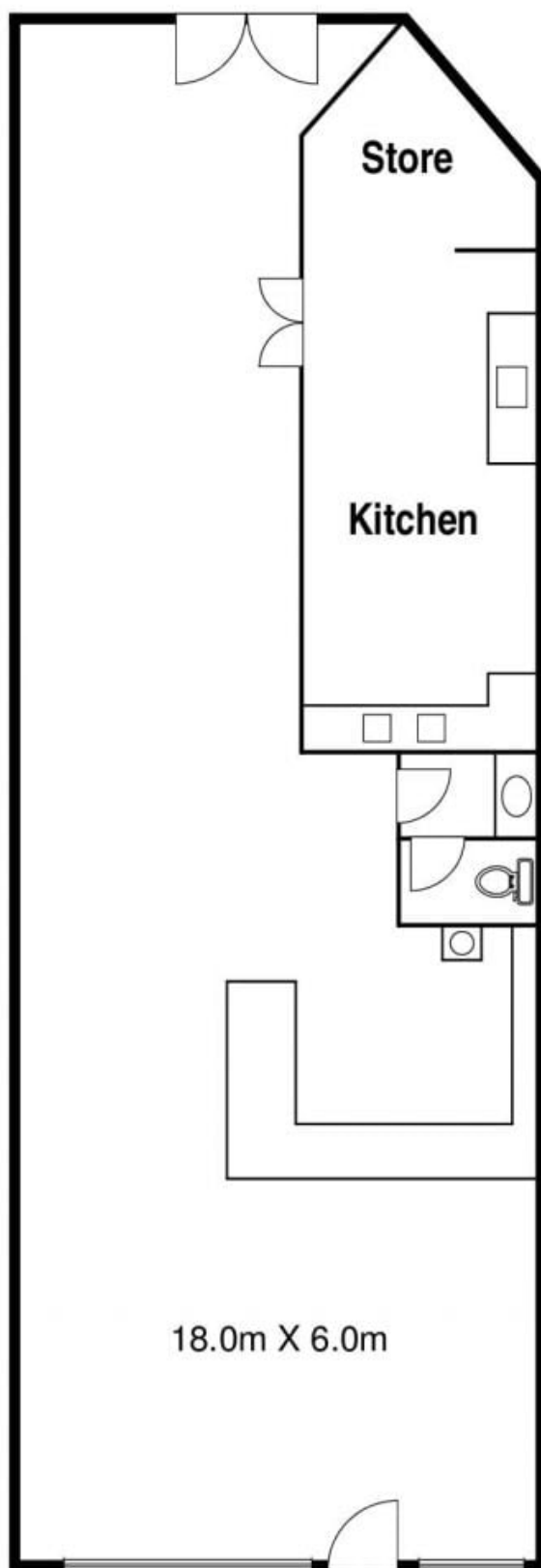
\$36,000 pa \$3,000 pcm \$692.30 pw
(Plus Outgoings & GST)



Michael Sabelberg
0450 554 317
michael.s@lovere.com.au



Branko Agatanovic
0448 035 565
branko.a@lovere.com.au



The information contained herein has been obtained through sources deemed to be reliable but cannot be guaranteed as to its accuracy. Any information of special interest should be obtained through independent verification.

313 Spring Street

Reservoir, VIC