



10/11-13 Northpark Drive Somerton, VIC

NEW MODERN WAREHOUSE!

- 147 SQM (approx) including 44SQM (approx) mezzanine area
- Excellent internal height and clearance
- Close to Metropolitan Ring Road, Hume, Epping Fruit and Veg markets and all arterial
- Secure gated parking
- One car space
- Staff amenities
- Electric rollerdoor



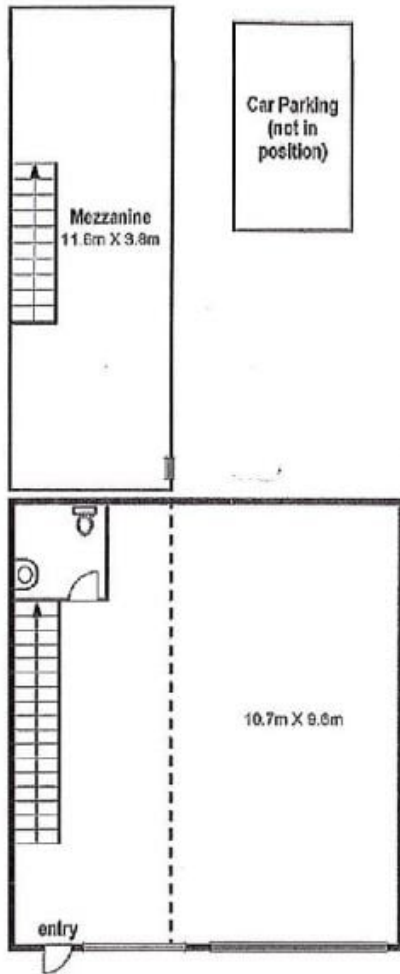
Branko Agatanovic **Michael Sabelberg**

0448 035 565

0450 554 317

branko.a@lovere.com.au

michael.s@lovere.com.au



The information contained herein has been obtained through sources deemed to be reliable but cannot be guaranteed as to its accuracy. Any information of special interest should be obtained through independent verification.

LOVE & CO

10/11-13 Northpark Drive

Somerton, VIC