

9/11-13 Northpark Drive Somerton, VIC

NEW MODERN WAREHOUSE!

- Secure 2 + 3 year lease currently returning \$17,500.00 PA plus GST and outgoings with annual CPI increases
- 147 SQM (approx) including 44SQM (approx) mezzanine area
- Excellent internal height and clearance
- Close to Metropolitan Ring Road, Hume, Epping Fruit and Veg markets and all arterial
- Secure gated parking
- One car space
- Staff amenities
- Electric rollerdoor
- Zoned Industrial One

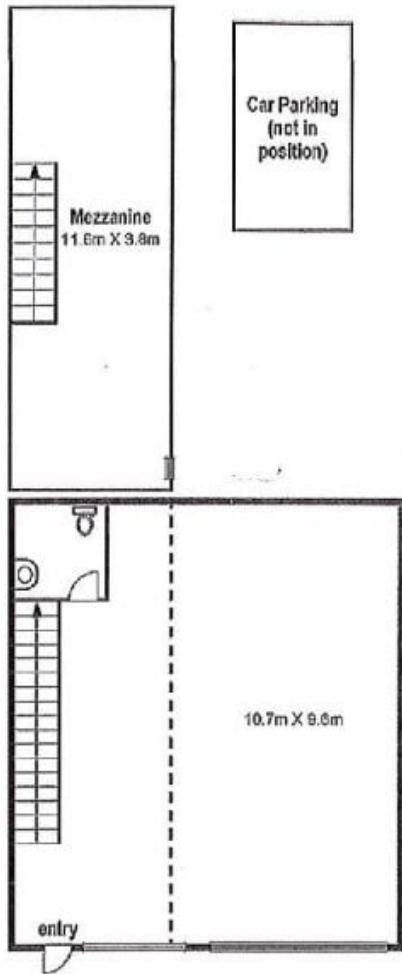
Price: \$345,000



Branko Agatanovic Michael Sabelberg

0448 035 565
branko.a@lovere.com.au

0450 554 317
michael.s@lovere.com.au



The information contained herein has been obtained through sources deemed to be reliable but cannot be guaranteed as to its accuracy. Any information of special interest should be obtained through independent verification.

LOVE & CO

9/11-13 Northpark Drive

Somerton, VIC