



1 Humeside Drive Campbellfield, VIC

OFFICE/WAREHOUSE WITH MODERN LOOKS

- Warehouse Area of 170 sqm approx
- Office Area of 40 sqm approx
- 3 Phase Power
- Modern Staff Amenities + Shower
- Electric Container Height Roller Door
- On-Site Parking for 2 Cars
- Zoned Industrial 1

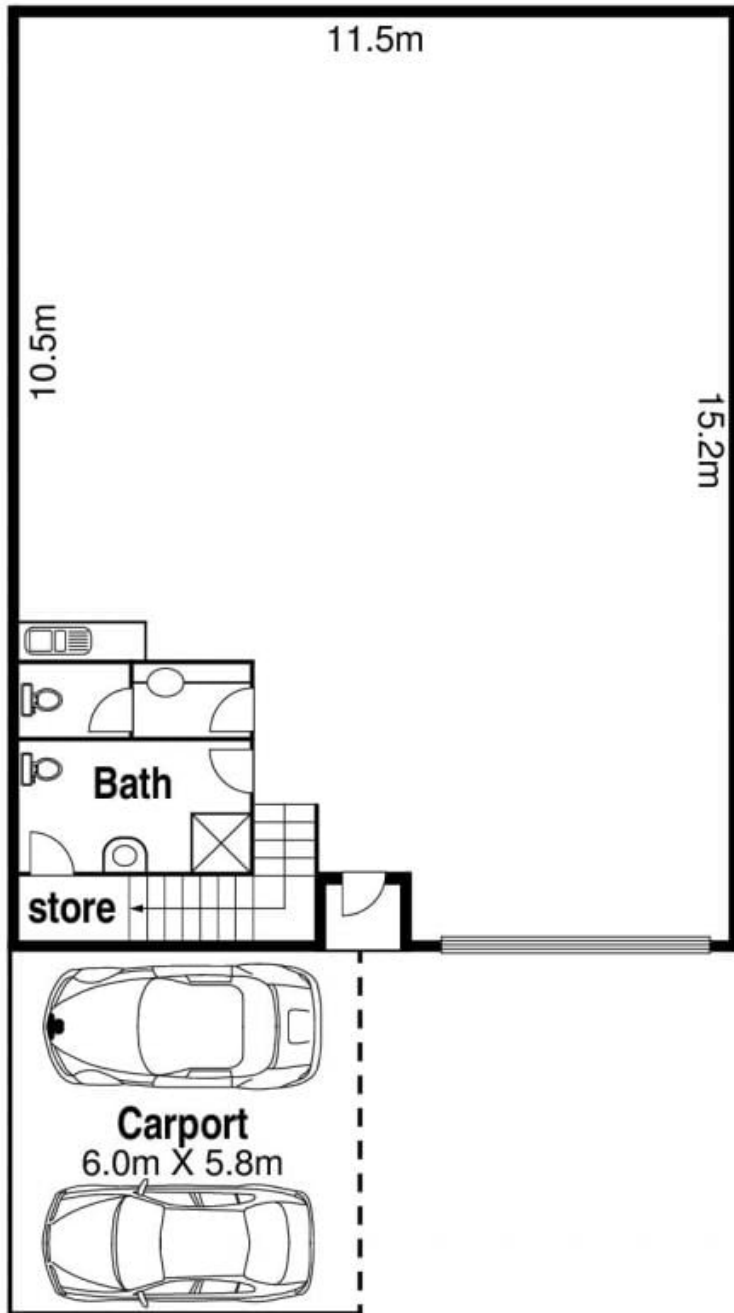
Rental:
 \$22,440 pa \$1,870 pcm \$431.53 pw
 (Plus Outgoings & GST)



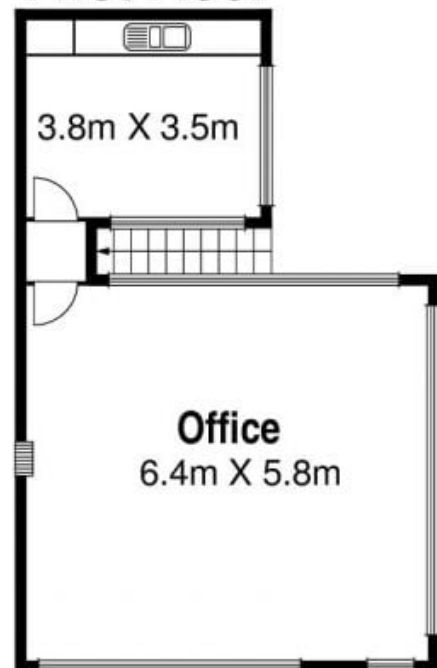
Michael Sabelberg
 0450 554 317
 michael.s@lovere.com.au



Branko Agatanovic
 0448 035 565
 branko.a@lovere.com.au



First Floor



The information contained herein has been obtained through sources deemed to be reliable but cannot be guaranteed as to its accuracy. Any information of special interest should be obtained through independent verification.

1 Humeside Drive Campbellfield, VIC