



38 Main Street Greensborough, VIC

**PRIME MAIN STREET RETAIL!**

- Excellent exposure to Main street and Greenbrough Plaza
- 160SQM (approx) of retail space
- Rear access with 2 private car parks
- Abundant street parking available
- Neighbouring tenants in close proximity include Chemist Warehouse, Target, Coles, JB HI-FI, McDonalds, ALDI and Major Banks
- Zoned ACTIVITY CENTRE ZONE - SCHEDULE 1 (ACZ1)

Available from early February 2019!

Rental \$55,490 PA - \$4,624.16 PCM - \$1,067.11 PW  
(Plus outgoings and GST)



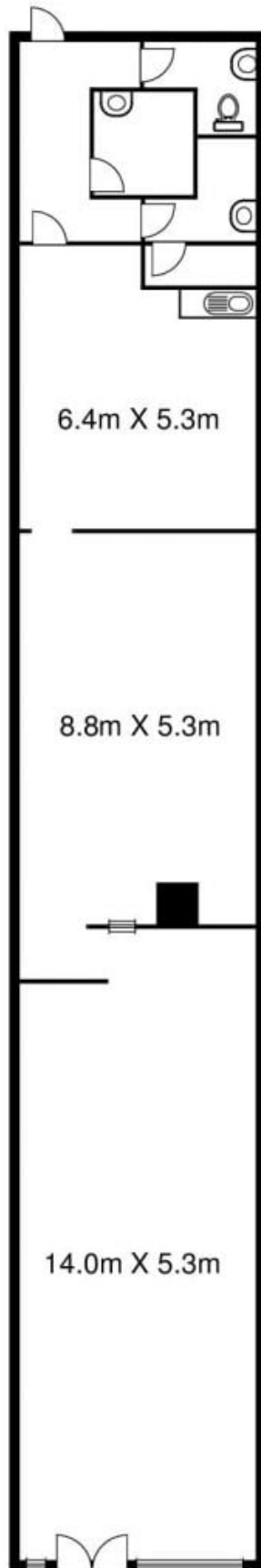
**Branko Agatanovic Michael Sabelberg**

0448 035 565

0450 554 317

branko.a@lovere.com.au

michael.s@lovere.com.au



Car  
Parking  
(not in  
position)

Car  
Parking  
(not in  
position)



The information contained herein has been obtained through sources deemed to be reliable but cannot be guaranteed as to its accuracy. Any information of special interest should be obtained through independent verification.

38 Main Street

Greensborough, VIC