



5/2 Boyle Crescent Mill Park, VIC

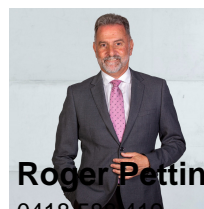


**Great Value in a "Blue Ribbon Locale"**  
 Securely Leased till August 2019 -  
 Instant

**Price:** SOLD - \$460,000

Enjoying street frontage, a glorious garden outlook and close proximity to a long list of desired amenities, a tranquil lifestyle beckons with this spacious single level unit. A short walk to parks, schools, the bus and all the benefits on offer at the Stables Shopping Centre. Modern living via large lounge with Tasmanian Oak hardwood floors, timber family Kitchen with excellent meals/family area, three robed bedrooms, large family bathroom, generous laundry. Outside features some timber decking overlooking the extra large and private rear yard, perfect for the kids and their pets!

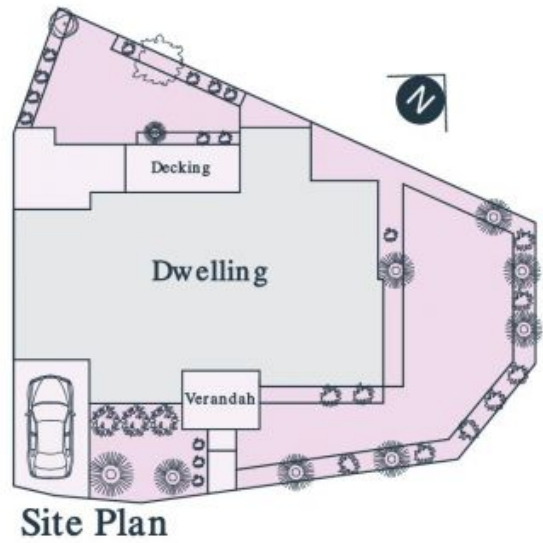
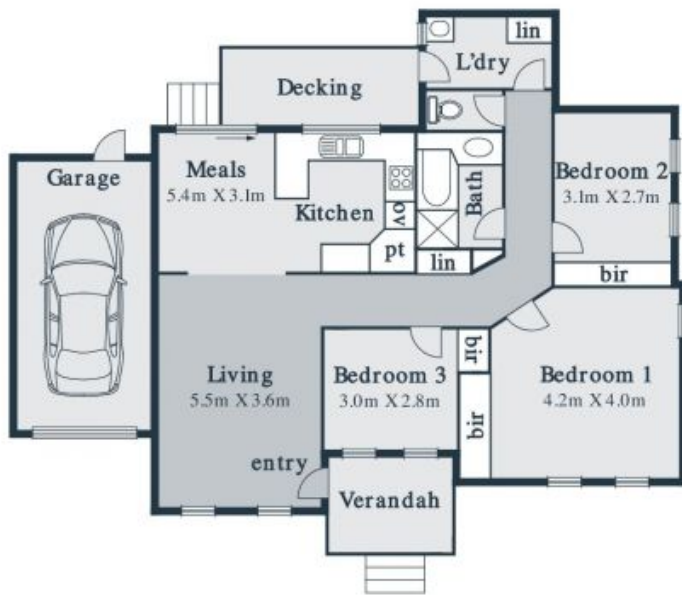
- ? Garage
- ? Ducted heating and cooling
- ? Living room with timber floors



**Roger Pettinella**  
 0418 588 419  
 roger.p@lovere.com.au



**Nick Kandi**  
 0412 310 704  
 nick.k@lovere.com.au



Every precaution has been taken to establish accuracy of the information in this brochure but does not constitute any representation by the vendor or agent