



202/90 Epping Road Epping, VIC



Apartment Living

Situated in the conveniently located Waratah Gardens Estate, this apartment offers a low maintenance lifestyle. With its spacious design, light filled rooms and proximity to Lyndarum Village, transport, schools and Epping Plaza.

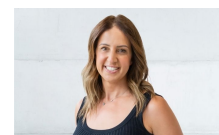
- One Bedroom with built in robes
- Large private balcony
- Open kitchen, meals & living areas
- Laundry facilities
- Split system heating & cooling
- Under cover parking

LOVE & CO NO.1 FOR PROPERTY MANAGEMENT

Price: \$330 Per Week



Toula Lovett



Toula Lovett

lovemillpark@mail.inspectrealest.com | lovemillpark@mail.inspectrealest



LOVE & CO

202/90 Epping Road Epping, VIC
Every precaution has been taken to establish accuracy of the information in this brochure but does not constitute any representation by the vendor or agent