



26/58 Mahoneys Road Thomastown, VIC

MODERN OFFICE / WAREHOUSE

Warehouse/Office of 295 m2 approx, located in the Mahoneys Road Business Park within close proximity to the Western Ring Road, Edgars Road and the Hume Highway.

Features include:

- Warehouse of 255 m2 approx with carpeted first floor office of 40m2 approx with heating & cooling.
- Container height electric roller door
- Male / Female toilets
- On-site parking
- Kitchenette
- Alarm

Rental \$29,500 pa, \$2,458.33 p/month, \$567.31 per week plus Outgoings & GST



Branko Agatanovic **Michael Sabelberg**

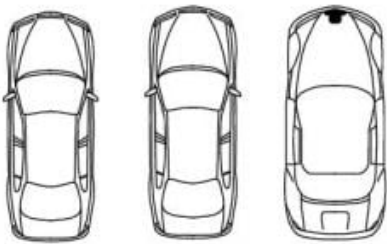
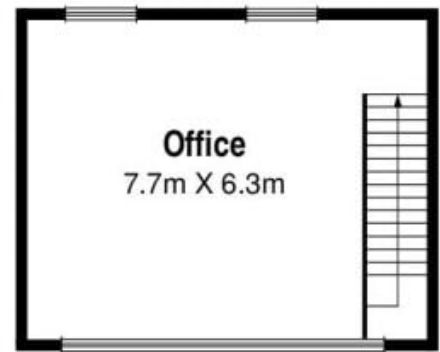
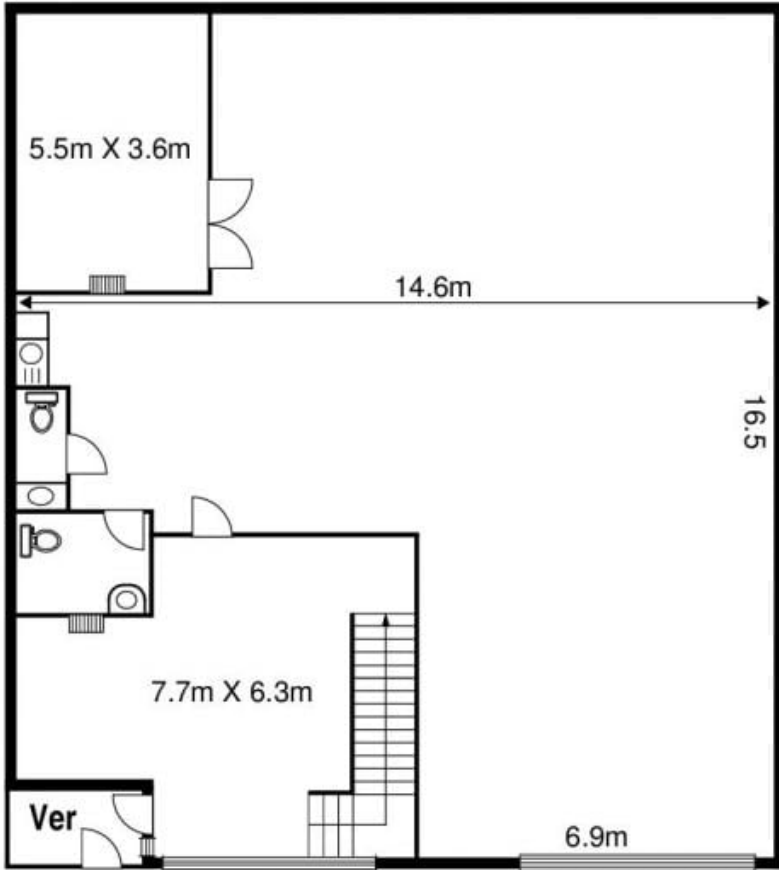
0448 035 565

branko.a@lovere.com.au



0450 554 317

michael.s@lovere.com.au



The information contained herein has been obtained through sources deemed to be reliable but cannot be guaranteed as to its accuracy. Any information of special interest should be obtained through independent verification.

26/58 Mahoneys Road Thomastown, VIC