

36B Lipton Drive Thomastown, VIC

BRAND NEW WAREHOUSE / OFFICE (ONLY 2 ON SITE)

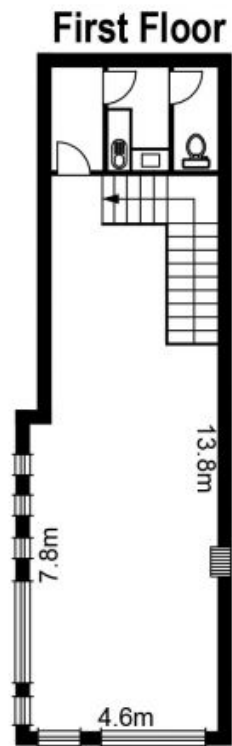
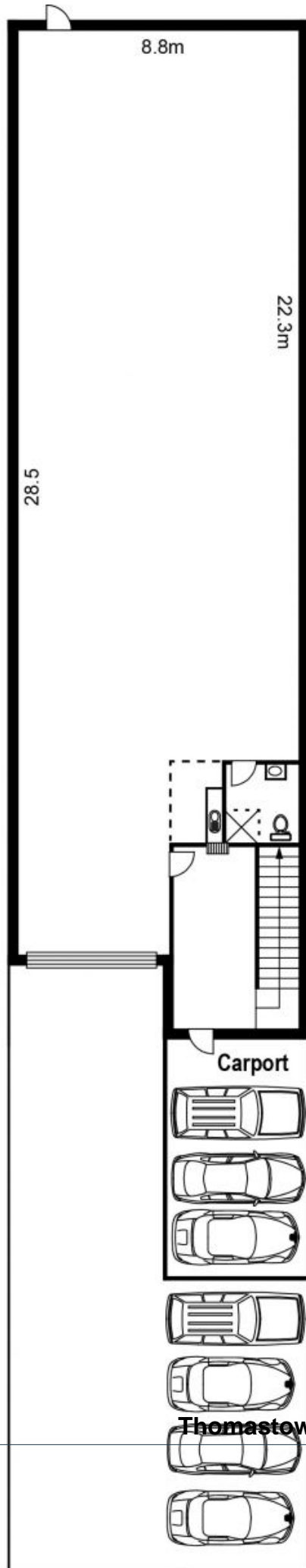
- * 274 m2 approx warehouse & 31 m2 approx Mezzanine Office
- * Air conditioned
- * Excellent Amenities included
- * Electric Container Height Roller Door
- * 6 Car spaces
- * Secure Remote Control Gating
- * \$28,940 p.a. plus Outgoings & GST



Branko Agatanovic

0448 035 565

branko.a@lovere.com.au



LOVE & CO